



**Create together,
learn together**



Your visual solutions partner for creative learning

Optoma offers schools an ecosystem of visual display technology and software that creates a collaborative, intuitive, and productive classroom environment – from interactive, LCD, and DvLED displays, to award winning projectors and management software. The Optoma platform seamlessly integrates with devices from other manufacturers, ensuring compatibility and flexibility within your existing infrastructure.

By integrating cutting-edge hardware, intuitive software, and dedicated service solutions, Optoma empowers schools to transform classroom experiences. Optoma's mission is to equip educators with the tools they need to inspire, engage, and personalize learning, creating a sustainable and future-ready education ecosystem. Together, we make every lesson impactful and every learning journey extraordinary.



Why Optoma?

Optoma is a global leader that adopts a local, customer-minded approach to deliver impactful virtual solutions and services in more than 150 countries worldwide. With more than 25 years of visual technology innovation and experience, Optoma provides adaptable visual solutions that empower users through simple and easy-to-use technology.

United by an ambition and passion to transform education, Optoma is committed to building strong partnerships with school leaders, teachers and IT managers to create truly interactive classrooms and foster solutions that support transformative teaching and learning.



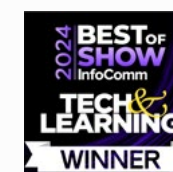
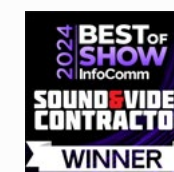
150+
countries



25+
years of
innovation



150+
Multi-award
winning





Empowering educators & transforming learning spaces



Education solutions for all spaces



Hardware

Transforming learning for every classroom

Our innovative products adapt to any classroom environment, empowering teachers to create engaging lessons that inspire students to learn and enjoy every moment.



Solutions

Revolutionizing learning

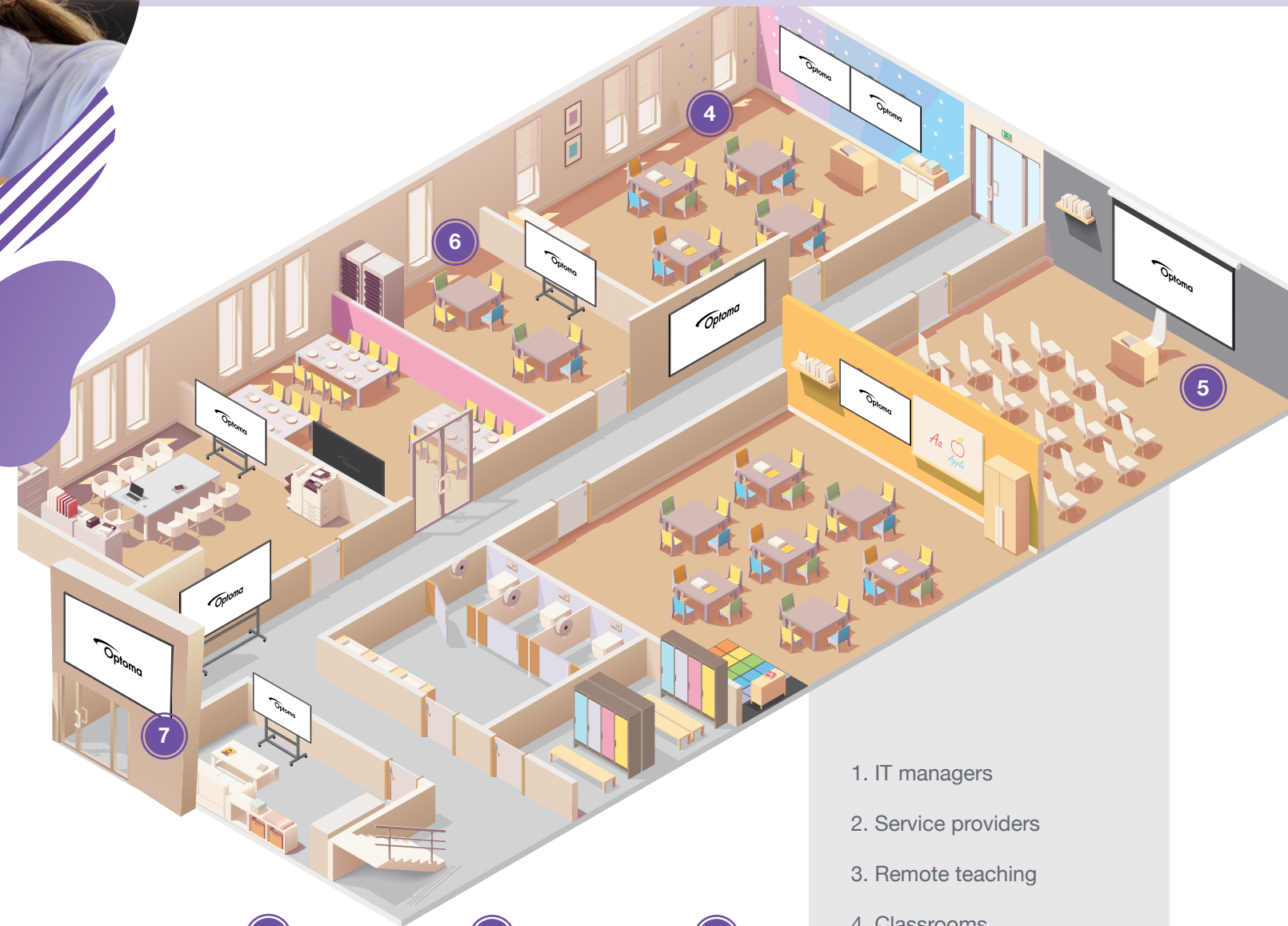
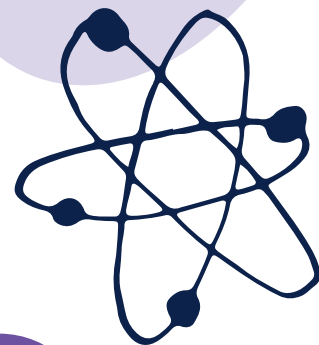
Optoma's intuitive software solutions improve classroom experiences by enabling seamless collaboration, interactive lessons, and easy management, helping educators deliver engaging and effective learning.



Service

Enhancing education with expert support

Optoma offers dedicated Service to help educators seamlessly integrate visual solutions and create dynamic, engaging learning environments.



1. IT managers
2. Service providers
3. Remote teaching
4. Classrooms
5. Auditoriums
6. Creative learning spaces
7. Big-screen digital signage



Simplify and transform every stage of teaching

Optoma Solution Suite (OSS) is an innovative solutions software platform to enhance the user experience and includes Whiteboard, File Manager, and Display Share. By providing access to a multitude of media types and resources, teachers can easily customize learning experiences to meet individual student needs.

Prepare: Effortlessly access and adapt ready-made resources.

Teach: Foster engaging lessons with real-time collaboration tools.

Review: Easily review and share materials to reinforce learning.

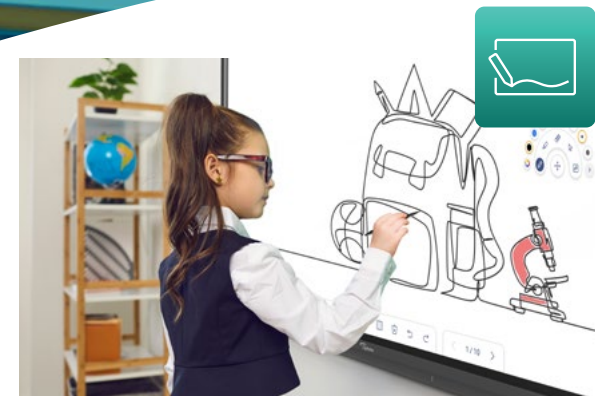


Technology partners



Google EDLA Certification

Advanced security measures and seamless integration with the Google ecosystem, including Google Workspace, and Microsoft 365 suite. Access Google accounts, files, and collaborative tools directly from the display.



Whiteboard

Empowering collaboration

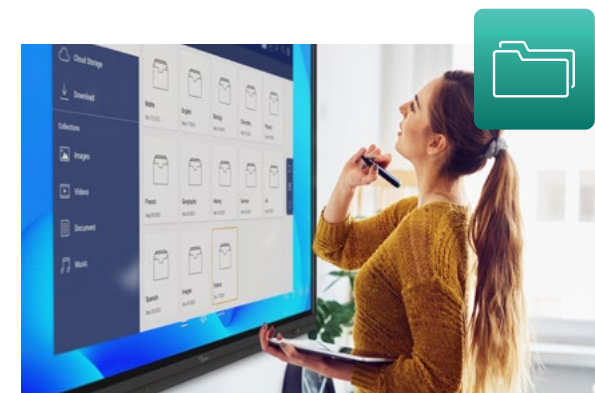
Engage your students. Creative sharing is easy with built-in annotation tools to help facilitate collaboration in the classroom. Designed for hybrid learning - Whiteboard provides smart collaboration and connectivity features for any classroom.



Display Share

Wireless sharing

Connect any device. Wirelessly broadcast, share or stream your content to the big screen with Display Share. Screen mirror high-quality images, video, documents and audio from your smartphone, laptop or PC - all with a touch of a button. Bringing your own device has never been easier.



File Manager

Expandable cloud storage

Easily save files, organize them or move them from local storage to networkable storage. Even move files to popular cloud services in seconds (Dropbox, OneDrive and Google Drive).



Create, connect & collaborate with Whiteboard

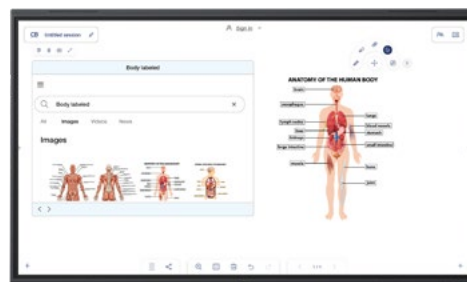


Inspire creativity and collaboration with our intuitive annotation tools. Designed for both in-person and remote learning, Whiteboard offers smart collaboration* features that connect classrooms. Effortlessly teach remotely, with multiple teams or students collaborating in real-time from different locations.



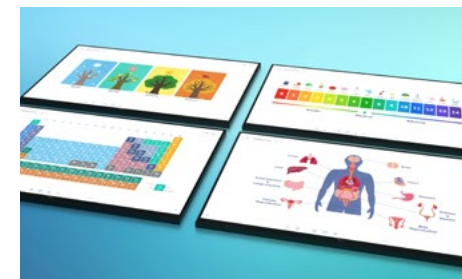
Change tools at a touch with our floating toolbar

Easily move and position the toolbar anywhere on the infinity canvas. Instantly select tools or choose different pen settings for smooth and flowing lessons.



Access websites without leaving the Whiteboard

Enhance your lessons and keep ideas flowing. Easily drag and drop images and video content from the embedded browser directly into the Whiteboard canvas.



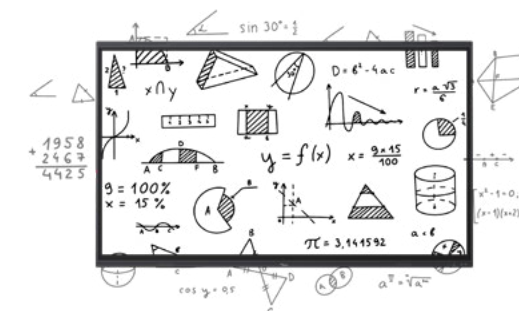
Access to templates and stickers - ideal for lesson content

Enhance your lessons and keep ideas flowing. Easily drag and drop images and video content from the embedded browser directly into the Whiteboard canvas.



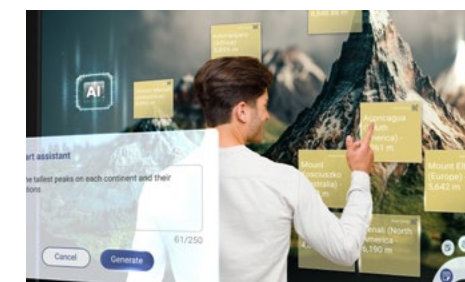
Seamlessly integrate with Google Classroom

Use the tools you already know and like. Seamless Google Classroom integration means teachers can create and import lesson materials from anywhere. Single sign-on (SSO) allows for quick syncing, bringing the power of paperless sharing and digital collaboration to the classroom. Work on lesson plans at home and effortlessly transfer them to any classroom.



Never run out of space with our infinity canvas

Draw anywhere, insert images and shapes, all of which can be saved, printed or shared with student devices, the infinity canvas will not limit your creativity and expands your workspace.



Experience the power of AI*

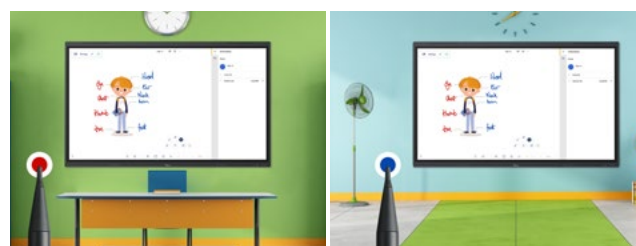
Effortlessly brainstorm, write, and calculate with our AI-enabled* Whiteboard. Generate sticky notes from text, enhance handwriting with seamless conversion and precise shapes, and solve equations directly on the board. Unleash creativity and boost productivity.

*Cloud Whiteboard, Whiteboard for web, Whiteboard collaboration functionality and some AI features may require the use of an Optima (OSS) account.



Teaching without limits: Display Share & Cloud Whiteboard*

With Display Share and our intuitive Cloud Whiteboard*, teaching transcends the physical classroom. Seamlessly stream lessons remotely and foster real-time collaboration, enabling students to engage and learn together from anywhere. Redefine teaching for the modern classroom and unlock a world of interactive learning possibilities.

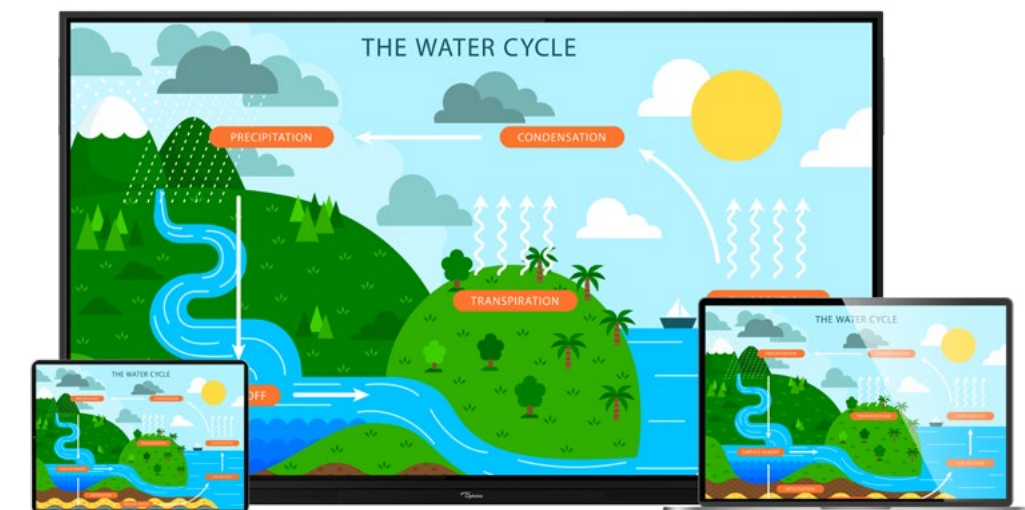


School 1

School 2

Seamless collaboration with cloud Whiteboard*

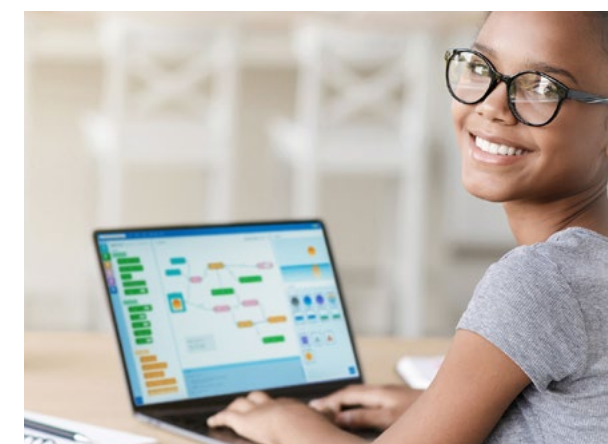
Sync with your cloud accounts to effortlessly plan lessons and access teaching materials from any Optoma Creative Touch display in your school. Collaborate seamlessly in Whiteboard across multiple displays, enabling real-time teaching and teamwork regardless of location.



Effortless screen sharing with Display Share

Connect any device and effortlessly share your content on the big screen with Display Share. Wirelessly mirror high-quality images, videos, documents, and audio from your smartphone, laptop, or PC with a single touch.

Bringing your own device (BYOD) has never been easier, empowering students and teachers with flexible and engaging learning experiences.



Whiteboard for web: Empowering hybrid and remote learning*

Whiteboard for Web* offers the ultimate solution for seamless collaboration and hybrid or remote education. Our proprietary software brings the power of cloud syncing and real-time collaboration to your fingertips, accessible right from the browser on your tablet or any other device. Teachers can now effortlessly share and broadcast Whiteboard teaching materials remotely.

The complete visual solution for education



Optoma offers schools an ecosystem of visual hardware and software technology solutions that create a collaborative, intuitive and productive classroom environment – from interactive, LCD and DvLED displays, to projectors and management software.



Interactive displays

Optoma's interactive displays are designed to transform your classroom into an engaging and interactive learning space.



Projectors

Optoma's cutting-edge laser projectors deliver stunning visuals and long-lasting reliability of up to 30,000 hours.



DvLED displays

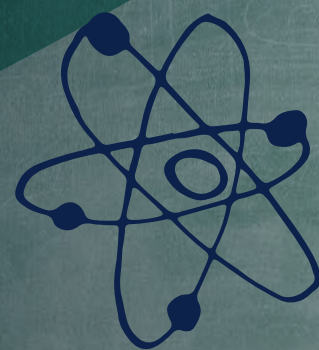
Our all-in-one DvLED displays offer a versatile and user-friendly large display solution for various spaces, including auditoriums, reception areas, and multipurpose rooms.



Professional displays

Elevate your school's communication with our advanced non-interactive professional displays for effortless connecting, presenting, and sharing.

Schedule a demo!



Interactive displays Elevate your classroom

Optoma interactive displays are designed to revolutionize education. Teachers can easily integrate them with our software solutions to deliver dynamic and engaging lessons. IT managers benefit from their reliability, easy deployment, and scalability. Students can collaborate with classmates and improve their learning outcomes through interactive content.



Optoma Solution Suite

OSS provides teachers with a comprehensive set of tools to enhance classroom engagement. This powerful platform includes resources for lesson planning, presentation, collaboration, and more, empowering educators to deliver dynamic and personalized learning experiences.



Connect across platforms

Connect any device. Wirelessly broadcast, share or stream your content to the big screen with Display Share. Screen mirror high-quality images, video, documents and audio from your smartphone, laptop or PC – all with a touch of a button. Bringing your own device has never been easier.



Optoma Management Suite

OMS® provides centralized control and remote monitoring to ensure classrooms stay connected. Leverage display technology for dynamic signage, live broadcasts, and critical safety alerts— designed for effortless management by administrators and IT managers.



5-Series

5653RK / 5753RK / 5863RK

The 5-Series interactive displays transforms ordinary classrooms into extraordinary learning spaces. With powerful features and intuitive design, you can focus on what truly matters: inspiring students.

Powerful hardware

- Octa-core Processor
- Android 13 OS
- Wi-Fi 6 support

Stunningly clear 4K resolution

4K Ultra HD resolution for great images, graphics, and videos

Collaborative learning

Up to 50 touch points (Windows), 32 points (Android), allowing multiple users to interact with the display simultaneously

Quick launch pen

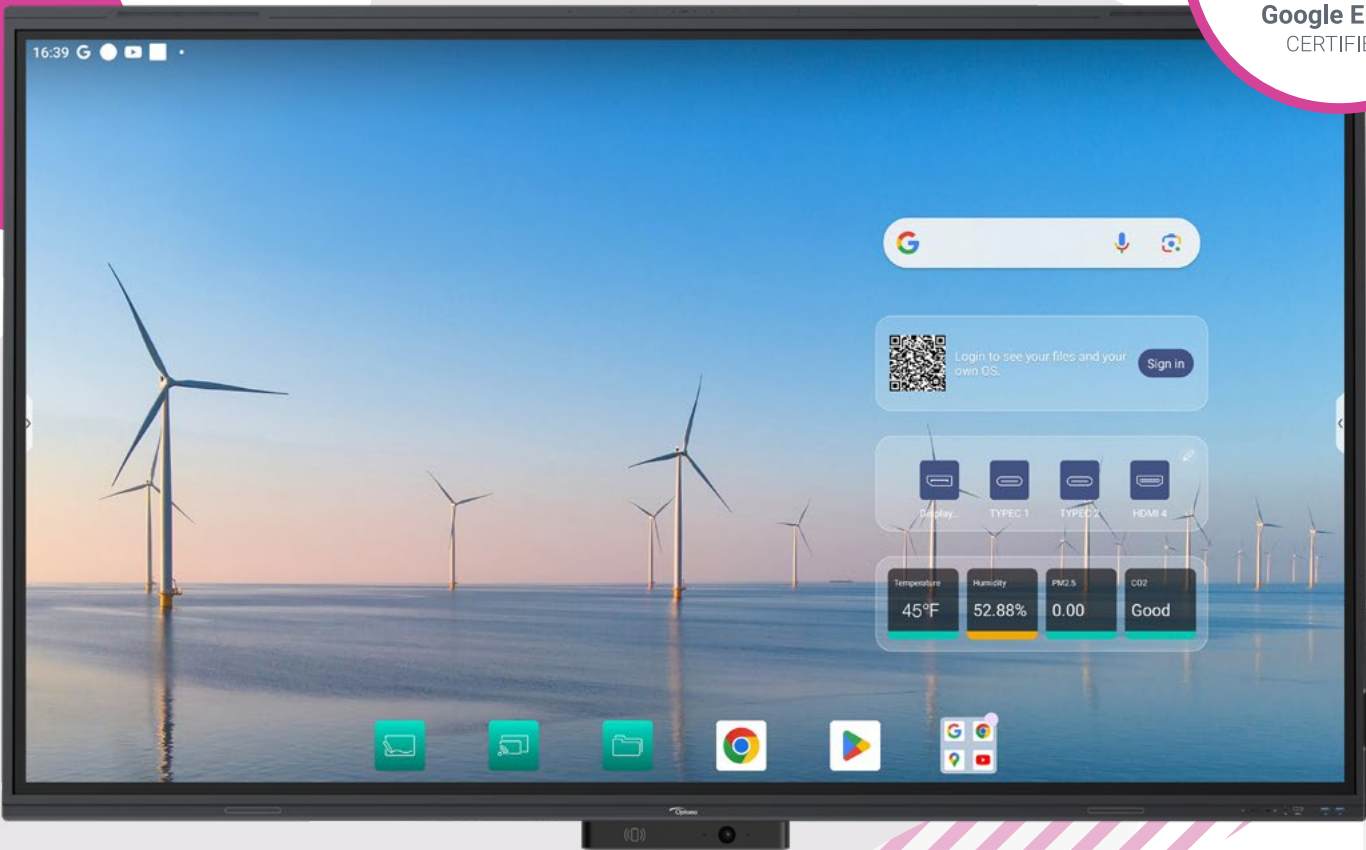
Start your lesson in seconds - simply removing the pen from the quick launch pen holder instantly launches your Whiteboard or annotation mode, while the 4096-pressure sensitivity allows for precise writing, drawing, and more!

Smart air quality sensor

Monitor temperature, humidity, CO2, and PM2.5 levels in real-time to ensure optimal learning conditions

Quick and secure login

Quick-access with NFC card tap or QR code



Sizes: 65" / 75" / 86"

Google EDLA certification

Advanced security measures and seamless integration with the Google ecosystem, including Google Workspace, and Microsoft 365 suite. Access Google accounts, files, and collaborative tools directly from the display

Premium sound quality

Enjoy high-quality audio with a subwoofer and built-in 8-mic array

Sync with cloud accounts

Work anywhere and any time with access to your local or cloud files



Built-in software suite

Optima Solution Suite (OSS) provides a comprehensive set of tools to enhance classroom engagement:

- Whiteboard – digital whiteboarding embedded browser and AI-powered tools
- Display Share – Wirelessly broadcast, share or stream your content
- File Manager – Expandable cloud storage



Efficient display management

Monitor, schedule, broadcast, and manage multiple displays simultaneously from any location



Mozaik education software

Free 1-year subscription of mozaBook education software with your Optima interactive display*

Key Features



Seamlessly integrate with Google Classroom



AI-enabled tools for Whiteboard



Wireless casting and sharing with Display Share



Remotely manage your displays



Anti-glare and anti-fingerprint glass



2x 18W speakers
2x 8W subwoofers



Ultra-versatile quick launch pen



Android 13 OS

*Free Mozaik education software subscription available for a limited time

3-Series

3653RK / 3753RK / 3863RK

The 3-Series interactive displays offer a perfect blend of cutting-edge technology and unbeatable value, specifically created for institutions looking for a reliable yet affordable solution.

Powerful hardware

- Octa-core Processor
- Android 14 OS
- Wi-Fi 6 support

Stunningly clear 4K resolution

4K Ultra HD resolution for great images, graphics, and videos

Collaborative learning

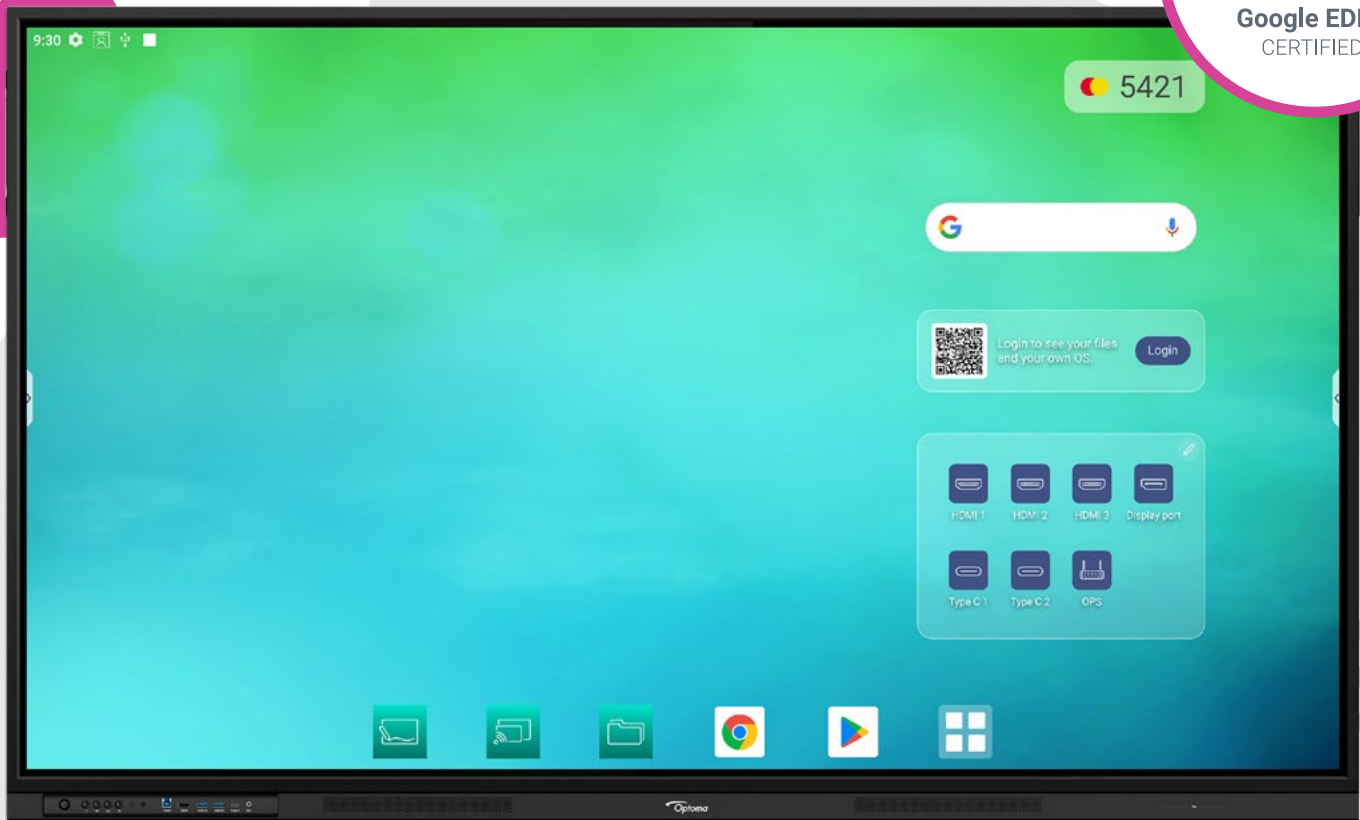
Up to 50 touch points (Windows), 40 points (Android), allowing multiple users to interact with the display simultaneously

Greater accuracy

Zero bonding technology for increased touch sensitivity

High security

Screen and OSD lock



Sizes: 65" / 75" / 86"

Google EDLA certification

Advanced security measures and seamless integration with the Google ecosystem, including Google Workspace, and Microsoft 365 suite. Access Google accounts, files, and collaborative tools directly from the display

Sync with cloud accounts

Work anywhere and any time with access to your local or cloud files



Built-in software suite

Optoma Solution Suite (OSS) provides a comprehensive set of tools to enhance classroom engagement:

- **Whiteboard** – digital whiteboarding embedded browser and AI-powered tools*
- **Display Share** – Wirelessly broadcast, share or stream your content
- **File Manager** – Expandable cloud storage



Efficient display management

Monitor, schedule, broadcast, and manage multiple displays simultaneously from any location**



Mozaik education software

Free 1-year subscription of mozaBook education software with your Optoma interactive display***

Key Features



Seamlessly integrate with Google Classroom



AI-enabled tools for Whiteboard*



Wireless casting and sharing with Display Share



Remotely manage your displays



Anti-glare and anti-fingerprint glass



2x 20W speakers



Android 14 OS



Zero bonding

*Cloud Whiteboard, Whiteboard for web, Whiteboard collaboration functionality and some AI features may require the use of an Optoma (OSS) account

Free trial available for a limited time. *Free Mozaik education software subscription available for a limited time.



Safety Innovations

Optoma is thrilled to partner with Raptor[®] Technologies, the leading innovator in school safety solutions, redefining the landscape of school security with its Raptor School Safety Software Suite. By integrating Raptor's software with Optoma's interactive displays, school administrators and students can receive real-time alerts and emergency notifications using CAP protocols to improve the overall safety of the school.

Working together

towards a mission

to keep *every* child and *every* school safe *every* day.

*Emergency alert features, including integration with Raptor Emergency Alert, are intended solely as support tools for IT administrators and designated personnel. Optoma makes no guarantees regarding the accuracy, reliability, or performance of these functions, which may be affected by network connectivity issues, system malfunctions, third-party service interruptions or other reasons. Optoma assumes no responsibility for the delivery, timeliness, or effectiveness of emergency messages sent through or in connection with Raptor Emergency Alert.

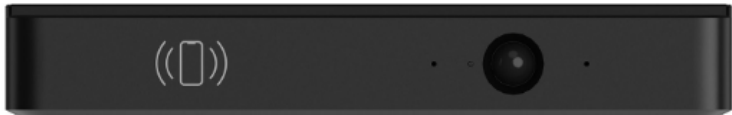


Display accessories



Secure single swipe login

A NFC card reader provides a secure, single single-tap login. Our intelligent air quality sensor monitors temperature, humidity, CO₂, and PM2.5 levels for an optimal learning environment.



Enhance your learning space

Equip your classroom with the tools to enhance learning and collaboration.

USB conference camera

Facilitate remote collaboration with high-quality video and audio.

Wireless module

Connect wirelessly to devices and networks. Simplify setup and reduce cable clutter.



OPS

Enhance your display's capabilities with our compact, slot-in PC. Eliminate the need for a separate computer, simplifying setup and management.

Operating system not included.

Carts & mounts

Choose from our range of compatible carts and mounts to suit your classroom needs. Opt for a motorized cart for effortless vertical movement or a wall mount for a fixed installation.



Projectors for education

Optoma’s cutting-edge laser projectors deliver stunning visuals and long-lasting reliability of up to 30,000 hours. Our casting solutions empower seamless content sharing, fostering collaboration.

Classrooms

Ultra short throw and standard throw projectors



ZH430UST

Compact, ultra short throw 4000-lumen laser projector. Projects 100” images from 20 inches away, eliminating presentation shadows.

- Bright 4,000 lumens
- Ultra short throw lens
- Full HD 1080p resolution



ZH507+

Bright, 5500-lumen laser projector offers smart features, USB-A connectivity, and a wireless adapter for WiFi and app integration. It’s also compatible with OMS.

- Bright 5,500 lumens
- Full HD 1080p resolution
- 1.6x zoom, vertical lens shift and portrait mode

Wireless casting solutions

Seamless content sharing

QCP 4K Starter kit

Easily share content from HDMI sources wirelessly via the Optoma QuickCast Pro. Simply connect the QuickCast Pro receiver to an HDMI input, plug the HDMI transmitter into the source and begin wirelessly transmitting office documents, presentations, videos and digital content with the click of a button.



Auditoriums and lecture halls

Short throw and standard throw projectors



ZH350ST

Compact laser projector with short throw capabilities, for placement within 1.6ft. of any wall. Featuring 360-degree and portrait mode operation and an RS232 connection for monitoring and control.

- Bright 3,500 lumens
- Short throw lens
- Full HD 1080p resolution



ZH520

Compact high brightness laser projector with 360-degree and portrait mode operation, and an RS232 connection for monitoring and control.

- Bright 5,500 lumens
- Full HD 1080p resolution
- 1.3x zoom for a flexible setup



ZH450ST

Compact high brightness laser projector with short throw capabilities, for placement within 3ft. of any wall. Featuring 360-degree and portrait mode operation and an RS232 connection for monitoring and control.

- Bright 4,200 lumens
- Short throw lens
- Full HD 1080p resolution



Welcome, Dr. Smith, to Cornell Middle School!



Professional Displays for Education

Elevate your school's communication with our advanced professional displays. Available in sizes 65 to 98 inches, these displays offer stunning 4K Ultra HD resolution, ensuring crystal-clear visuals that captivate and educate.

With user-friendly software and seamless integration with Optoma Management Suite (OMS®), you can easily manage and share content across your school. From classroom lessons to important announcements, our displays provide a flexible and efficient solution.



N-Series

- Built-in tiling mode for multi-screen and digital signage setups
- 24/7 operation for uninterrupted functionality
- Built-in apps for connecting, presenting, and collaborating globally
- Intuitive media player and scheduling tools
- Supports both portrait and landscape orientation



Versatile and user-friendly large display solution for your school

All-in-one DvLED Display Solutions

The all-in-one DvLED display is perfect for various spaces, including auditoriums, reception areas, and multipurpose rooms.

Its energy-efficient design helps reduce running costs, while built-in speakers eliminate the need for additional equipment. Plus, stunning visuals and clear audio make it ideal for engaging both teachers and students.

With built-in media player and scheduling functionality, you can easily create, customize, and schedule your own media playlists via Optoma Management Suite (OMS®). Display important announcements, school events, and inspiring messages to create a positive and engaging atmosphere.



Wall-mount for community spaces or use with a stand for added flexibility

- **Stunning visuals:** The high-brightness display and Full HD resolution deliver crystal-clear images that captivate audiences.
- **Audio:** Built-in speakers provide high-quality sound without the need for additional equipment.
- **Easy installation and maintenance:** The all-in-one design simplifies setup and reduces ongoing maintenance costs.
- **Remote management:** Optoma Management Suite (OMS®) enables remote monitoring and control, ensuring optimal performance.



Optoma Management Suite

Smart control for seamless learning

Ensure seamless learning with centralized control and remote monitoring of mixed-brand display devices across classrooms and campuses. Maximize uptime while utilizing display technology for simple signage and scheduled broadcasts. Deliver clear guidance and ensure safety during emergencies with ease.



OMS®
More than
just device
management

Designed for
effortless management
by IT managers and
service providers

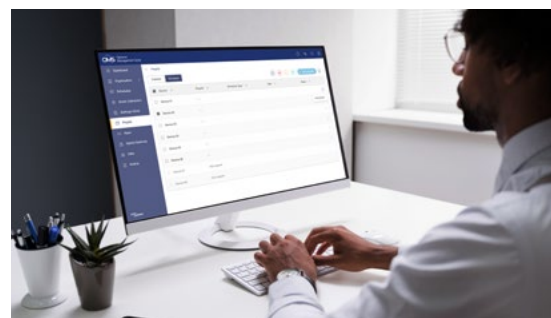


OMS® delivers greater intelligence to drive better results



IT manager: Secure network environment

A secure way to manage and control displays. Ensure that unauthorised access to the network or individual display is prevented.



Service providers: Single dashboard

Allows support desk to manage multiple displays from a single central platform without switching to different tools.



Single dashboard

Monitor multi brand display devices with instant error notifications.



Instant multimedia broadcast

Text, images, audio, and even YouTube videos can be instantly broadcast to any display device.



24/7 device history access

Device data including command history, system update logs, usage data available anytime on the cloud.*



Classroom availability

Monitoring all connected display estates to ensures minimal device downtime.



Flexible IT options

OMS® is available on Cloud, Hybrid, or On-Premise for your IT and security needs.



Eco-friendly

Reduce carbon footprint with less travel for on-site maintenance



Optoma Management Suite

More than just Device Management

Standard

- » Up to 5 Devices
- » 1 User Account
- » 1GB Cloud Storage

Ideal for Meeting and Learning Spaces

Designed for IT Managers

Advanced

- » Up to 20 Devices
- » 20 User Accounts
- » 15GB Cloud Storage

Ideal for Schools and businesses

Designed for IT Managers

Professional

- » Up to 50 Devices
- » 50 User Accounts
- » 50GB Cloud Storage

Ideal for Corporate and Educational Institutions

Designed for IT Managers and Service Providers

Custom

Custom-built solution for integrating more than 50 devices and users

Key Features	Standard	Advanced	Professional
Historical Data Reports	30 Days	30 Days	1 Year
Real-time Monitoring	✓	✓	✓
Centralized Device Control	✓	✓	✓
Multimedia Broadcast	✓	✓	✓
Alerts by Email		✓	✓

Activate Free Trial **



Optoma | Experience more

**Free trial available for a limited time.

*OMS is a registered trademark of Optoma Corporation.

Hyve

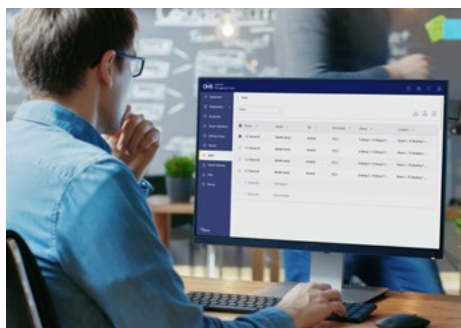
Brings centralized control and cloud-driven collaboration to legacy displays



For teachers

Optoma Solution Suite (OSS) for a unified interface

Hyve provides all devices with a unified interface, with OSS features like Whiteboard, File Manager, and Display Share to boost efficiency. With one platform, there's less time needed for training and more time available for teaching.



For IT managers

Optoma Management Suite (OMS®) for device management

Manage new and old AV systems together, controlling everything through OMS, even across global enterprises. No more headaches—just streamlined control.



For decision makers

Breathe new life into legacy displays

Boost productivity by reducing the need for constant upgrades. Hyve updates legacy displays, saving costs and simplifying collaboration with one powerful, easy-to-use system.



FREE DEMO



Service and Support

[More information](#)



Request a demo

[More information](#)



Contact us

[More information](#)

Certifications and partners



optomausa.com Optoma Technology, Inc.



Copyright © 2025, Optoma Technology, Inc, and its logo is a registered trademark of Optoma Corporation. Optoma Technology is the licensee of the registered trademark. Google Play and the Google Play logo are trademarks of Google LLC. App Store® and Apple logo® are trademarks of Apple Inc. All other product names and company names used herein are for identification purposes only and may be trademarks or registered trademarks of their respective owners. Errors and omissions excepted, all specifications are subject to change without notice. All images are for representation purposes only and may be simulated. 04/25