

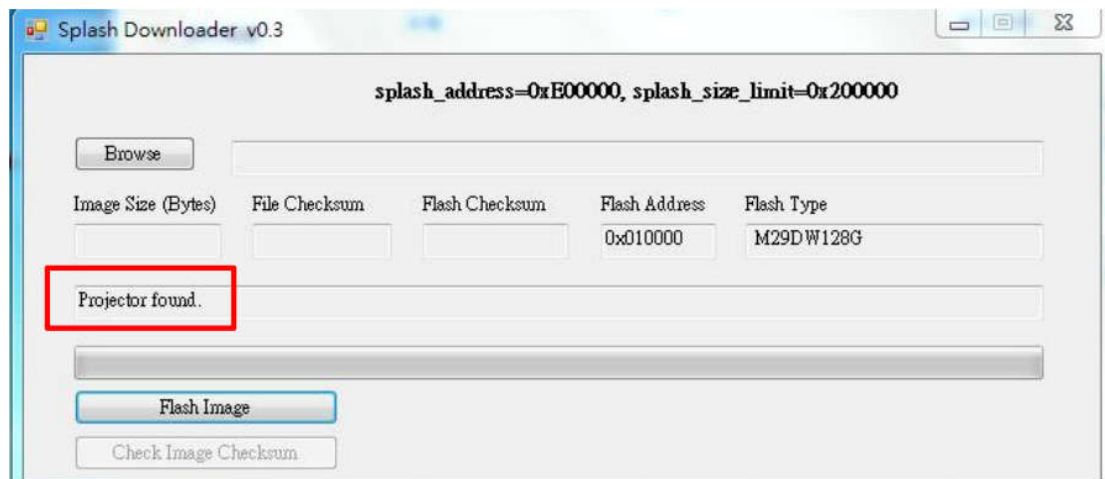
1. Download mode

Enter download mode .

For example, Optoma MS1, hold “Power” and “Menu” Key Button then plug in power cord.

2. Connect USB cable between PC and projector

3. Click Splash Downloader



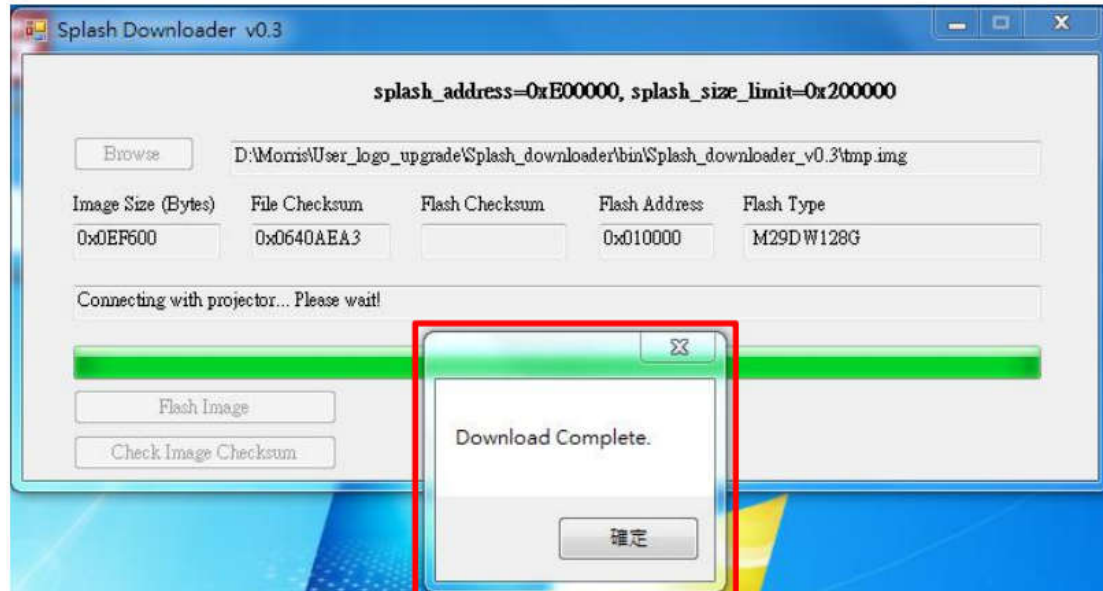
Note: If “Error: No Projector found.”, the projector is not connected. Please retry step 1 and step 2.

4. Select logo file

Click the "Browse" button and select logo file. The recommended resolution of logo should not exceed the default logo resolution. The purpose is that keeping the quality of the image. If not, the logo may be blurred. Only support “PNG” file format.

5. Download logo to projector

Click the "Flash Image" button. If the file was written to projector successfully, the message "Download Complete" will be displayed on the screen.



6. Reboot projector

Plug-out the power core of projector and plug-in it. Please ensure that the logo has been upgraded correctly.