

Optoma Software Solutions

**Intuitive, easy-to-use software tools
that help you work more efficiently**

Projectors | Professional Displays
Interactive Displays | LED Displays



Education / Training



Corporate



Large Venue



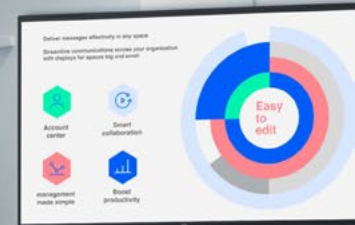
Experiential

About Optoma

Optoma is a visual solutions provider that has delivered stunning experiences to millions of people since 2000. Over the last two decades, we have grown our business to become one of the world's leading large-display brands. We have demonstrated our capabilities as a first-mover, innovator, and market leader and firmly established our position as the world's leading 4K UHD projector and DLP® brand.*

www.optomausa.com

*DLP is a registered trademark of Texas Instruments



+ Remote Desktop + Device Management + Broadcasting

OMS
Optoma Management Suite



For IT Managers



For Service Providers

+ Whiteboard + Display Share + File Manager

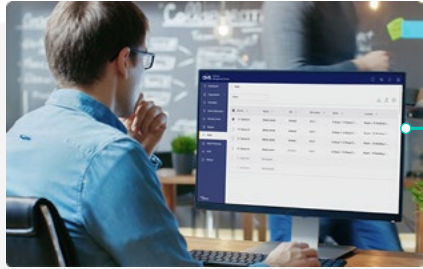
OSS
Optoma Solution Suite



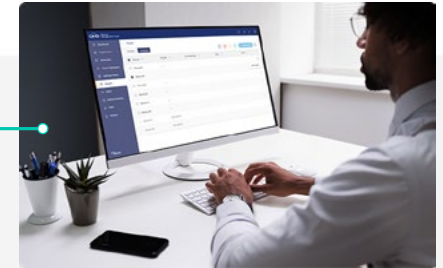
For Corporate

Enhance Your Experience Across All Spaces

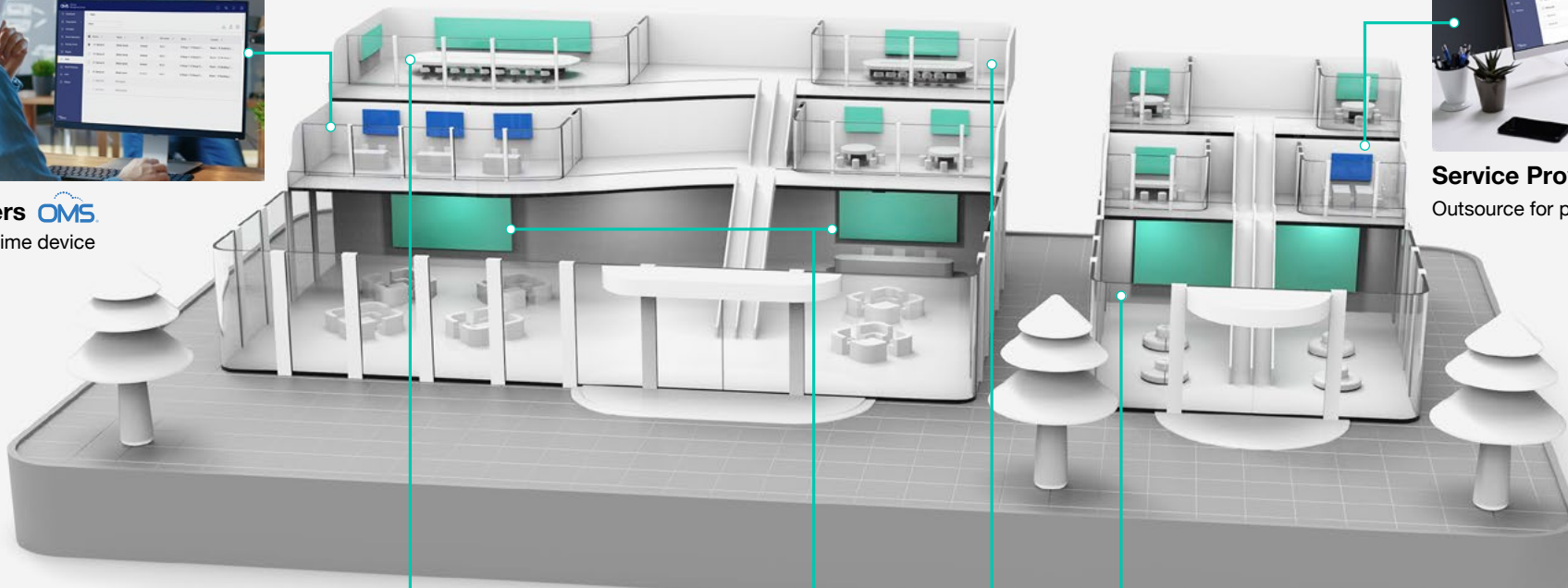
Keeping the user experience in mind, Optoma large-display software solutions cover end-to-end business and organizational user needs. Enrich and enhance any visual collaboration experience with **remote device management**, **cloud content collaboration** and **multimedia broadcast communications**. The Optoma Management Suite (OMS®) platform supports Optoma projectors, interactive displays, professional LCD displays and LED displays.



IT Managers **OMS**
Remote real-time device management



Service Providers
Outsource for proactive support services



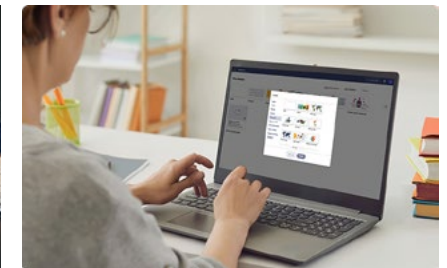
Huddle Room / Meeting Space
Cloud-based Whiteboard collaboration with **OSS**



Conference Room
Minimize maintenance tasks using smart calibration with **OMS**



Digital Signage
Effortlessly publish customized messages, video and more, including content from YouTube and Canva, directly to one or more displays with **OMS**



Remote Working
Remotely prepare lessons and presentations with **OSS**

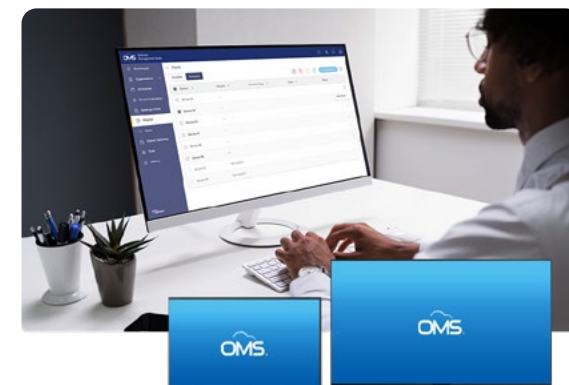


Create a Smarter Workplace for Better Results



IT Manager: Secure Network Environment

A secure way to manage and control displays. Ensure that unauthorized access to the network on individual displays is prevented.



Service Providers: One Centralized Dashboard

Allows support desk to manage multiple displays from a single central platform without switching to different tools.



Optoma
Management
Suite



Remote
Monitoring



Control &
Scheduling



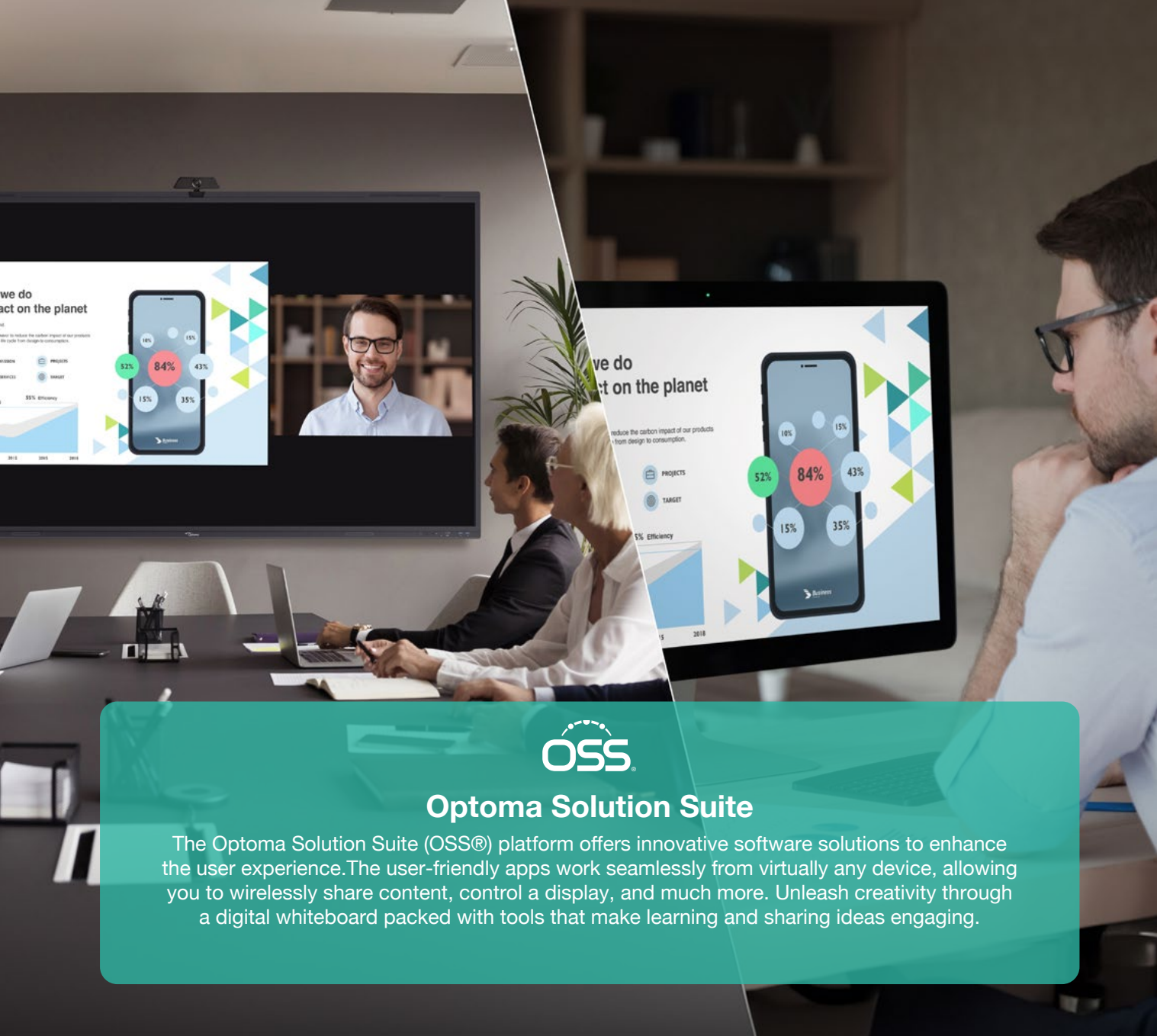
Diagnose &
Analyze



Multimedia
Broadcast

**Free trial available for a limited time

*OMS is a registered trademark of Optoma Corporation



Optoma Solution Suite

The Optoma Solution Suite (OSS®) platform offers innovative software solutions to enhance the user experience. The user-friendly apps work seamlessly from virtually any device, allowing you to wirelessly share content, control a display, and much more. Unleash creativity through a digital whiteboard packed with tools that make learning and sharing ideas engaging.



Optoma
Solution
Suite

Whiteboard



Display Share



File Manager



*Collaboration features are model dependent

**Remote collaboration requires the use of an internet connection and an OSS account

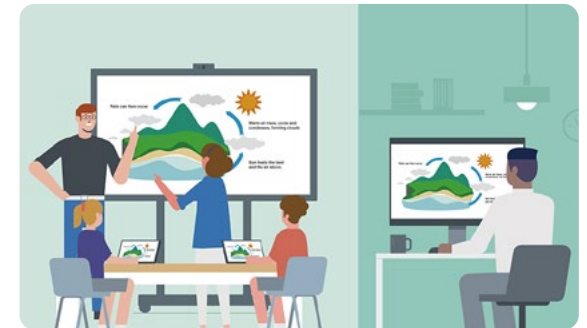


Engage Your Audience with Interactive Collaborative Presentations



Designed for Hybrid Working

Whiteboard provides smart collaboration and connectivity for any business environment.



Connect Globally

Teams can now share and annotate presentations simultaneously across their Optoma Interactive Displays, Non-Interactive Professional Displays (N-Series), and virtually any connected* display.

Join the team in project markups taking place in real time and from anywhere in the world.**



Experience more