



FHDC135 LED Display

Installation Guide

I. Structure installation

Floor standing installation



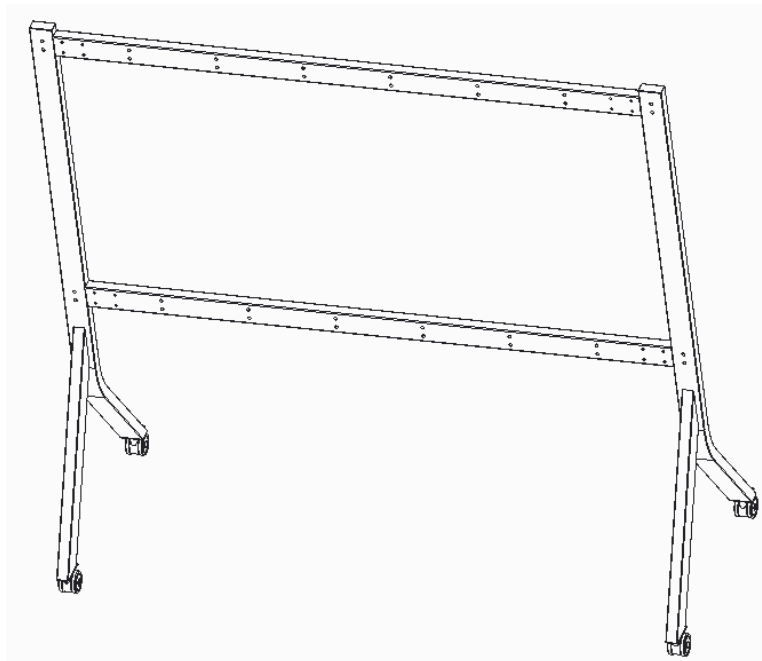
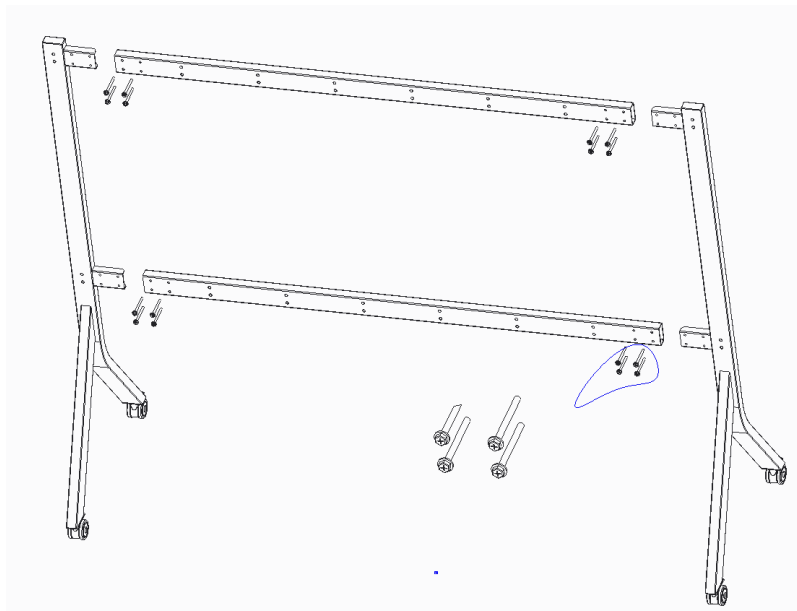
Floor standing installation effect

Installation steps :

Step 1 : Assemble the floor stand

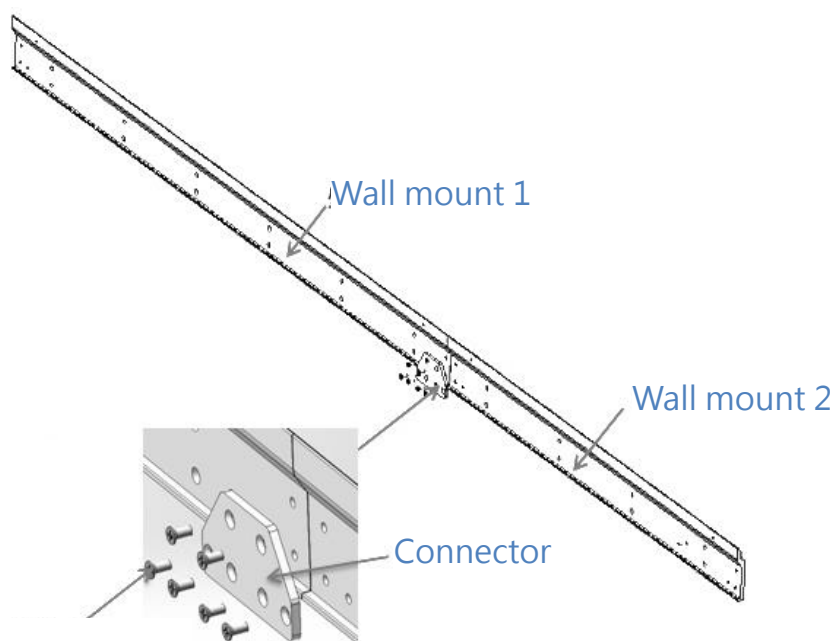
- 1)Based on the detailed list of floor stand assembly, find the corresponding components, as shown in the figure below :

2) Tighten the mounting screws with an appropriate tool to complete the installation of the floor stand assembly, as shown in the figure below :

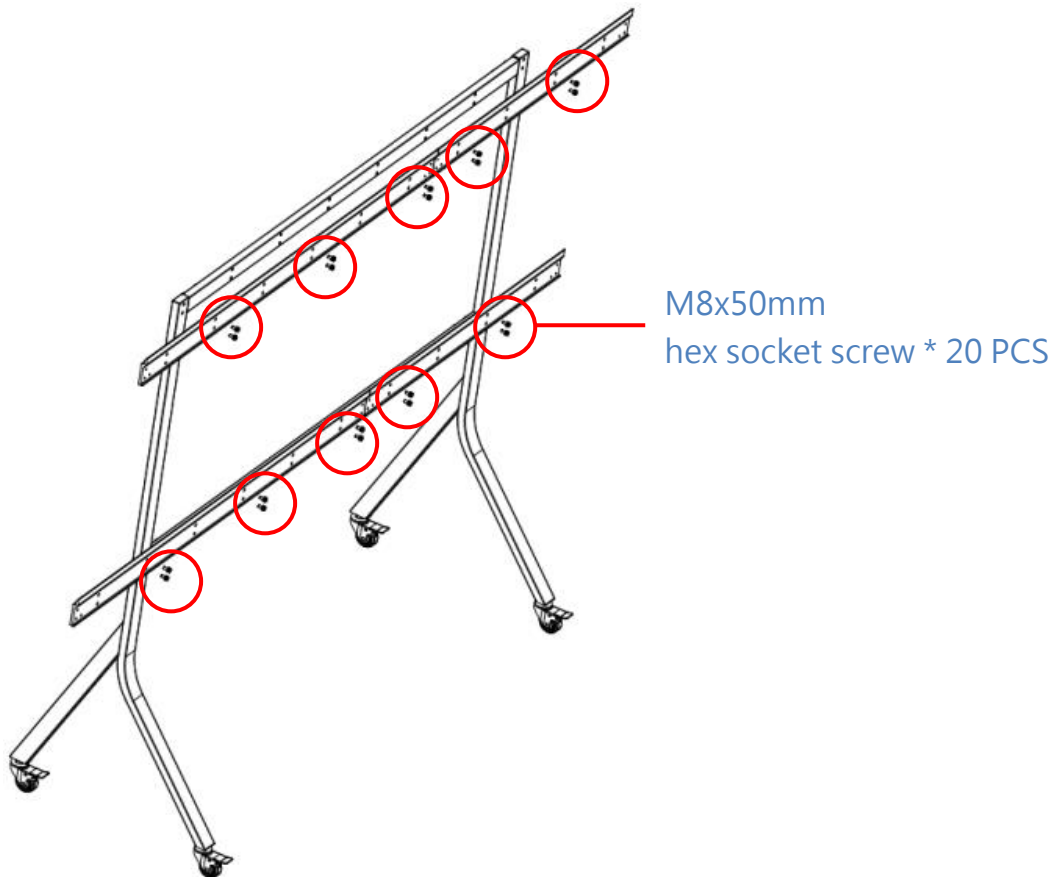


Step 2 : Install the wall mount

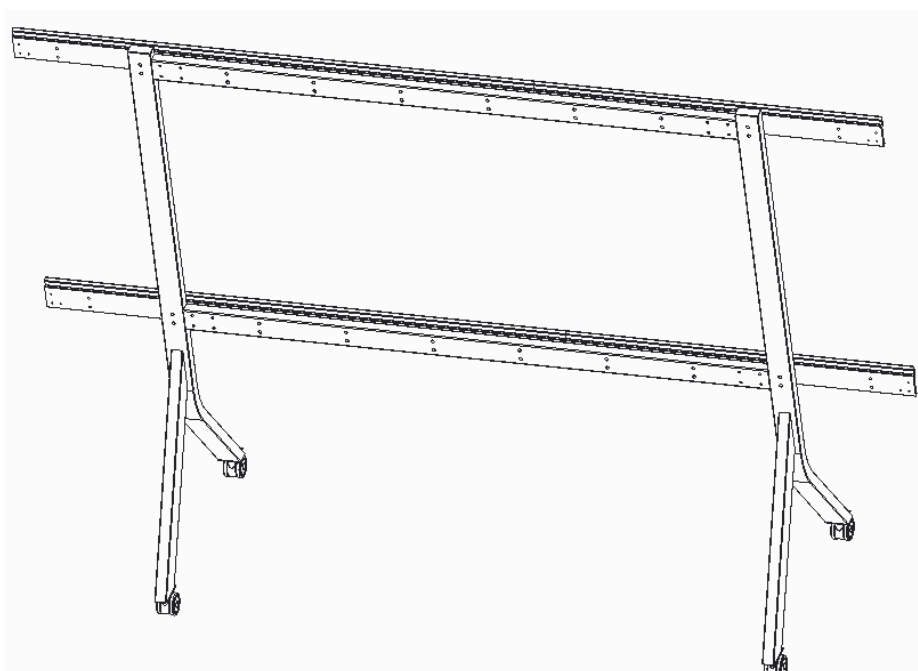
- 1) Select the corresponding accessories for the assembly of the wall mount as shown in the figure below :



2)Install the wall mount onto the floor stand as shown in the figure below :

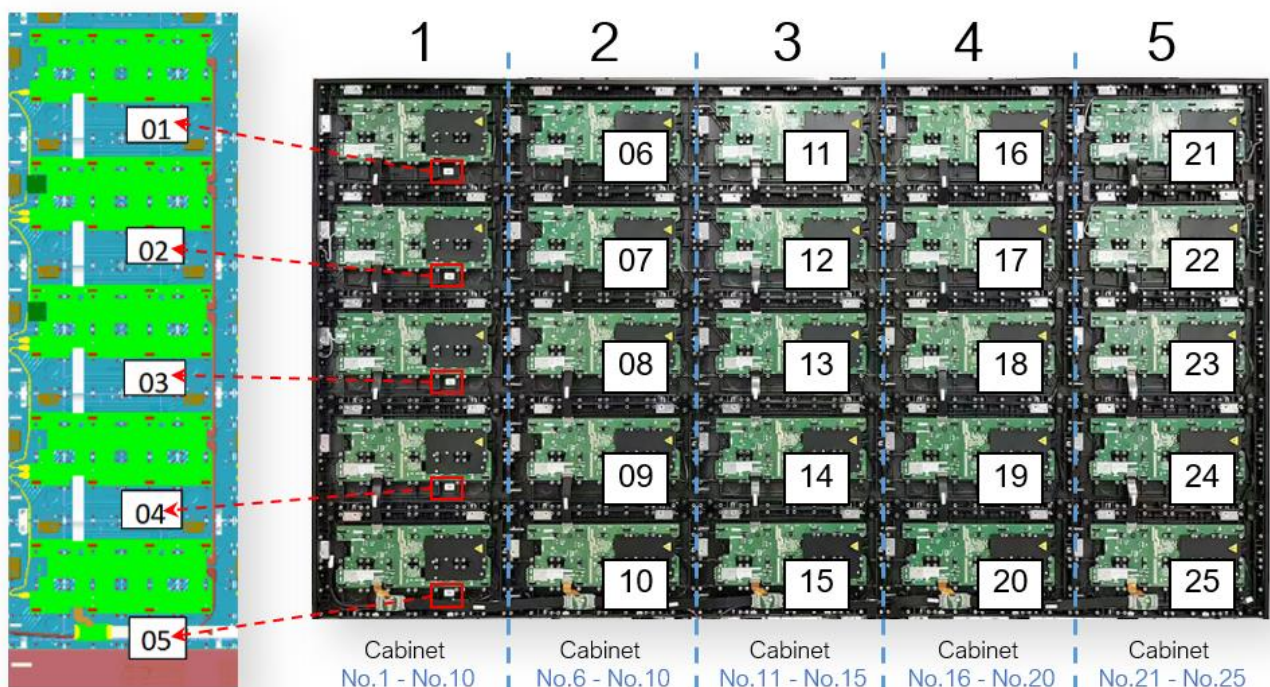


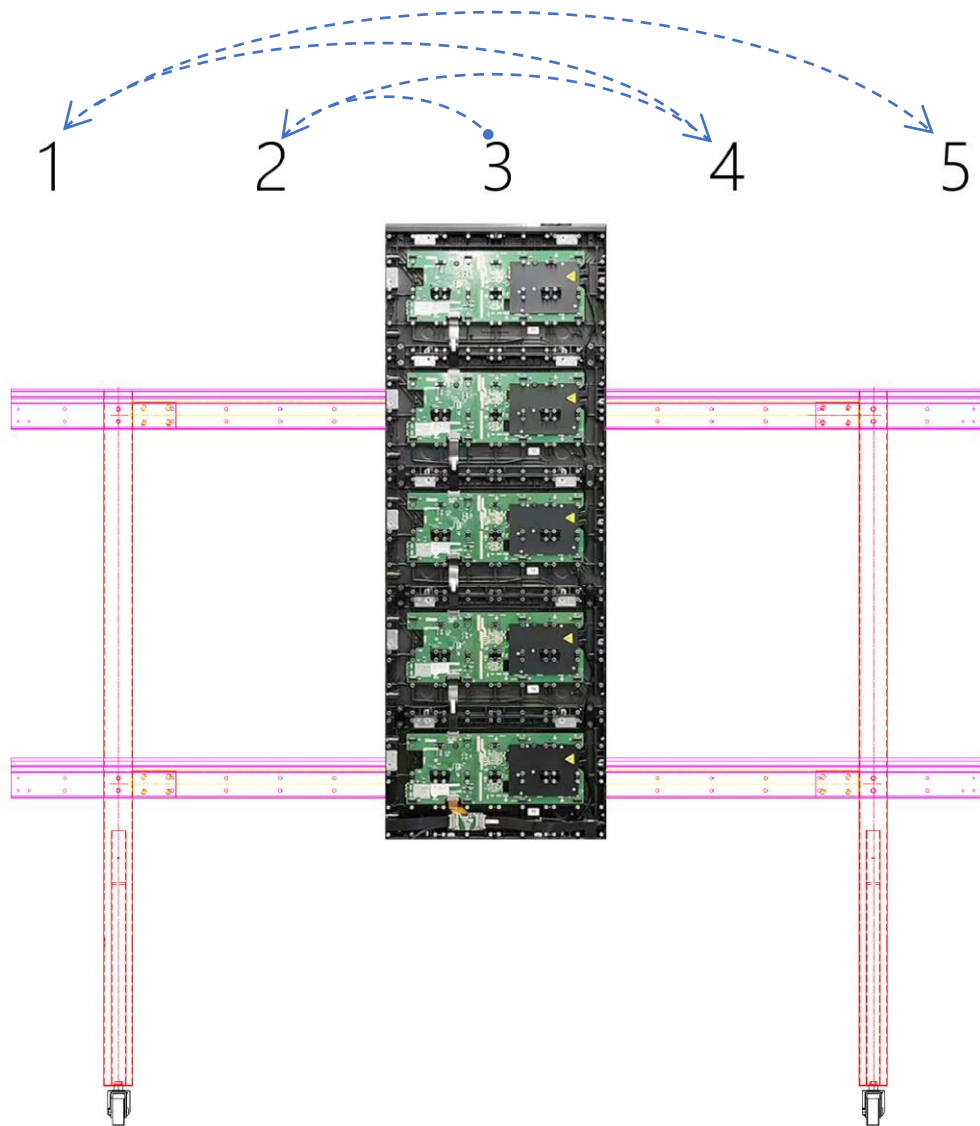
3)The wall mount and the floor stand have been assembled, as shown in the figure below :



Step 3 : Assemble the unit chassis

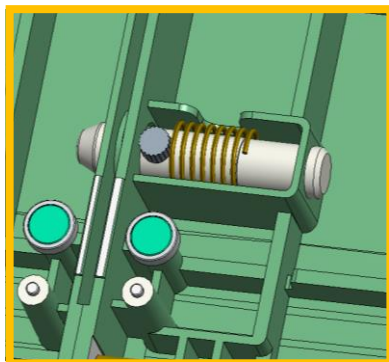
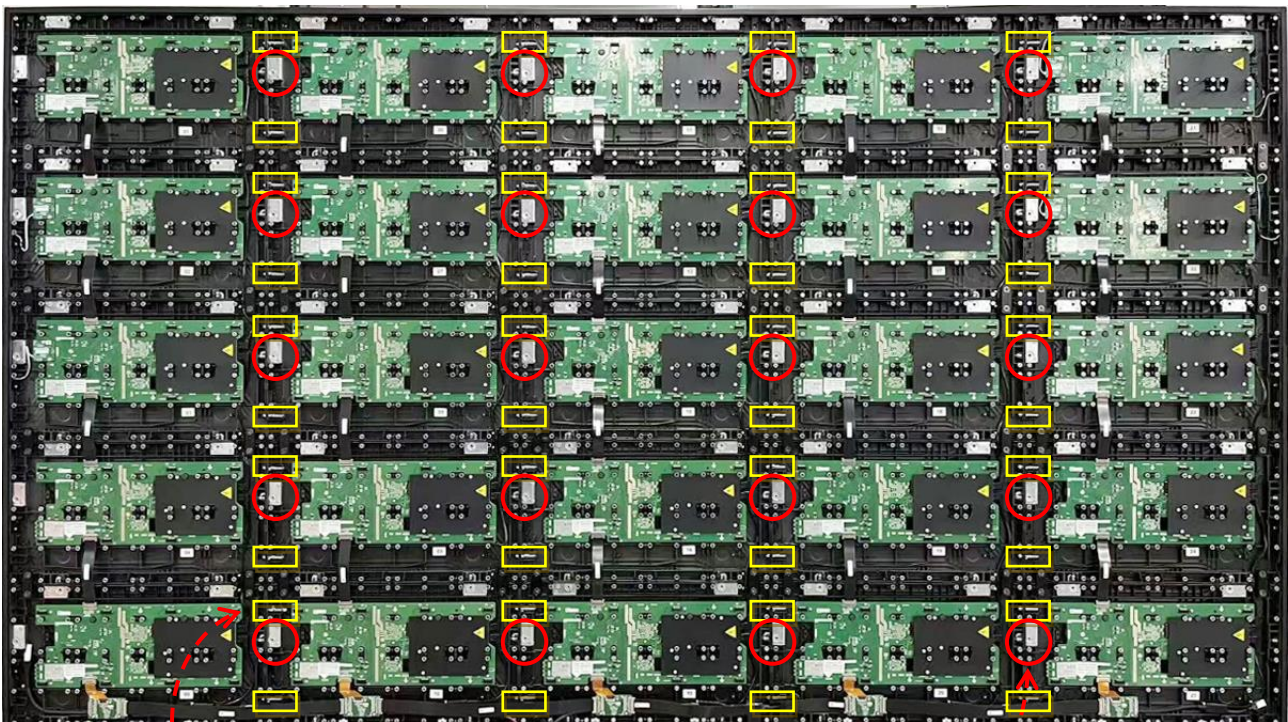
- 1) The unit chassis assembled in columns have been pre-installed with back hooks and edging.
- 2) The integrated LED display is shipped with the unit chassis arranged in a column according to their numbers, with a total of 5 columns arranged for FHDC135.
- 3) The method to distinguish the unit chassis numbers of the 5 columns of the FHDQ135 is by identifying the label numbers attached to the inside of each cabinet. As shown in the diagram :
 - Cabinet label numbers 1–5 correspond to unit Chassis 1.
 - Cabinet label numbers 6–10 correspond to unit Chassis 2.
 - Cabinet label numbers 11–15 correspond to unit Chassis 3.
 - Cabinet label numbers 16–20 correspond to unit Chassis 4.
 - Cabinet label numbers 21–25 correspond to unit Chassis 5.
- 4) OPTOMA recommends the assembly sequence for the 5 columns of FHDC135 LED panel units as follows: 3, 2, 4, 1, 5.



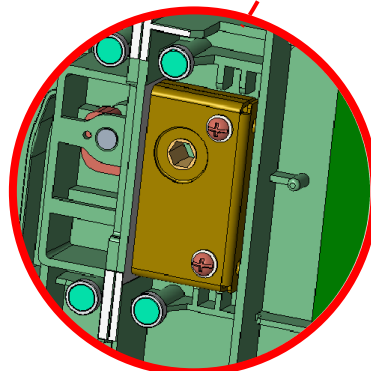


Step 4 : Assemble the whole

- * Before hanging the unit chassis, make sure the casters of the floor stand are locked, & the wall mount is level.
- 1) Hang the unit chassis from the middle to the sides, and hang the wall mount on the cabinet on the wall mount on the floor stand;
- 2) Install the adjacent second column of unit chassis, making the hooks hang on the wall mounts, while the adjacent sides are tightly aligned. Pull out the side spring locating pin, insert the locating pin completely into the corresponding locating hole, and then rotate the side hook lock with a corresponding Allen wrench to completely lock the two columns of unit chassis, as shown in the figure below :

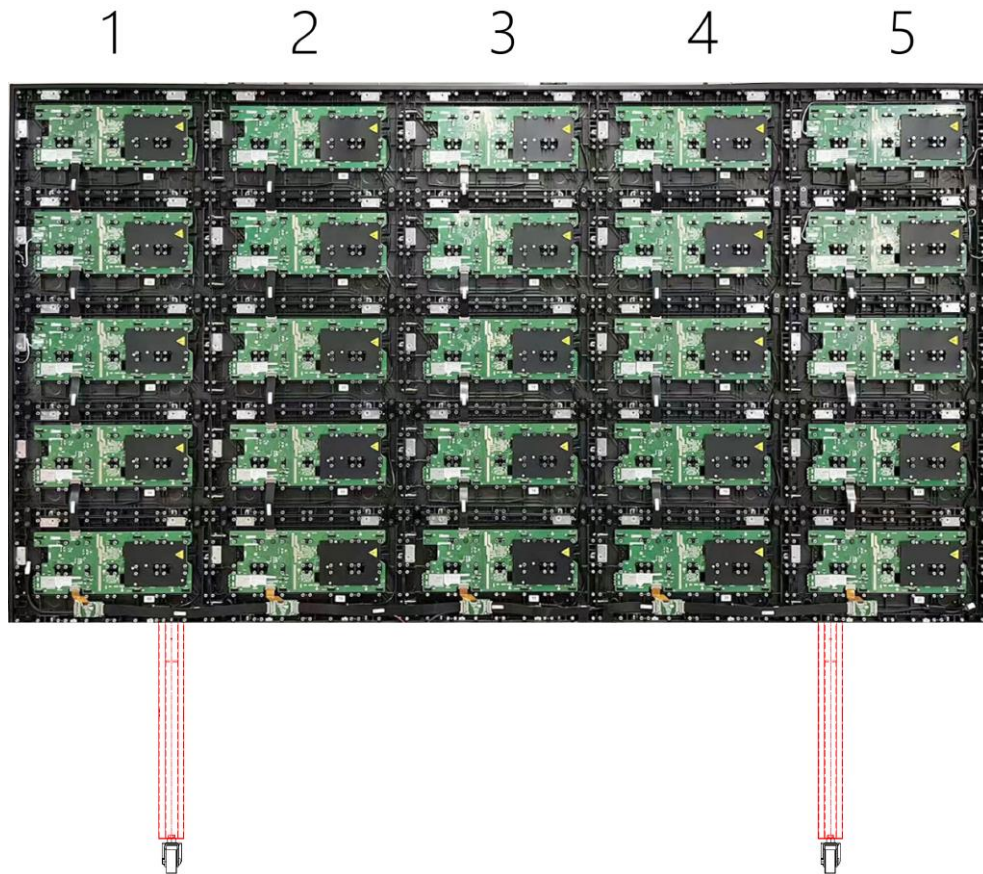


- Location pin * 20 PCS



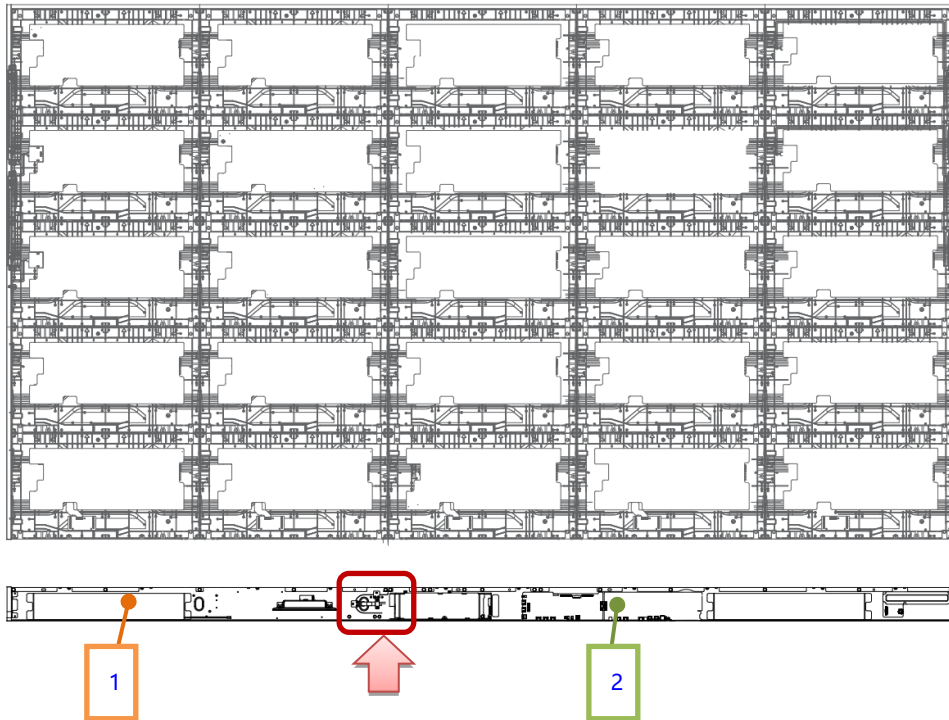
- Side hook * 20 PCS

-
- 3) Complete the installation of the other columns of unit chassis in order, as shown in the figure below :

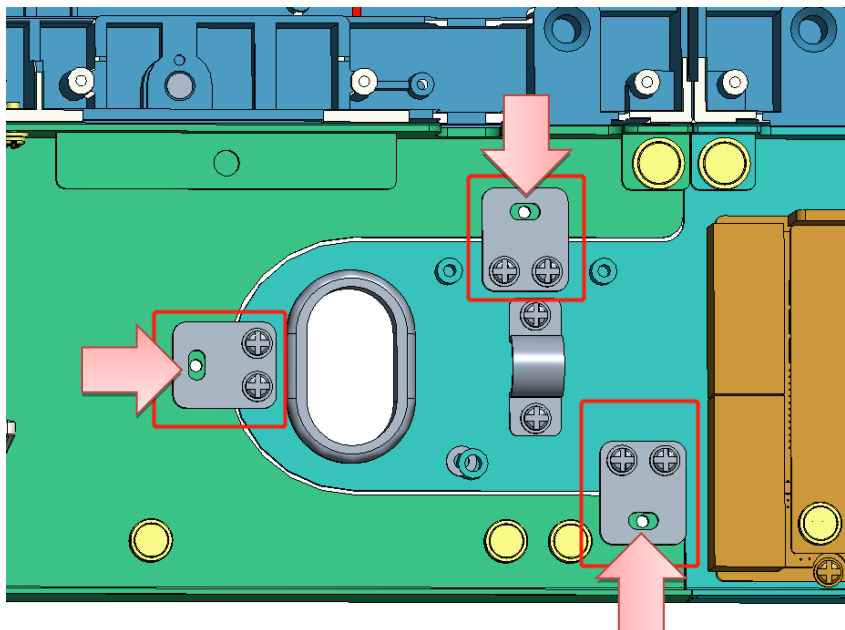


Step 5 : Assemble the bottom frame

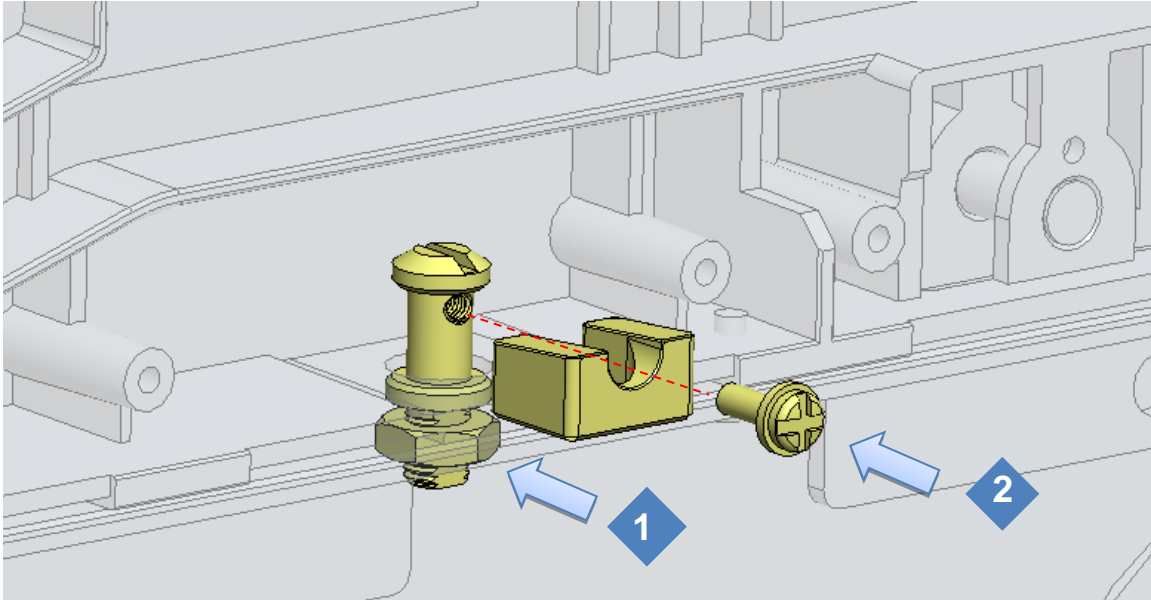
- 1) The bottom frame assembly is composed of bottom frames 1 and 2, connected by the built-in connecting plate for the bottom frame, as shown in the figure;



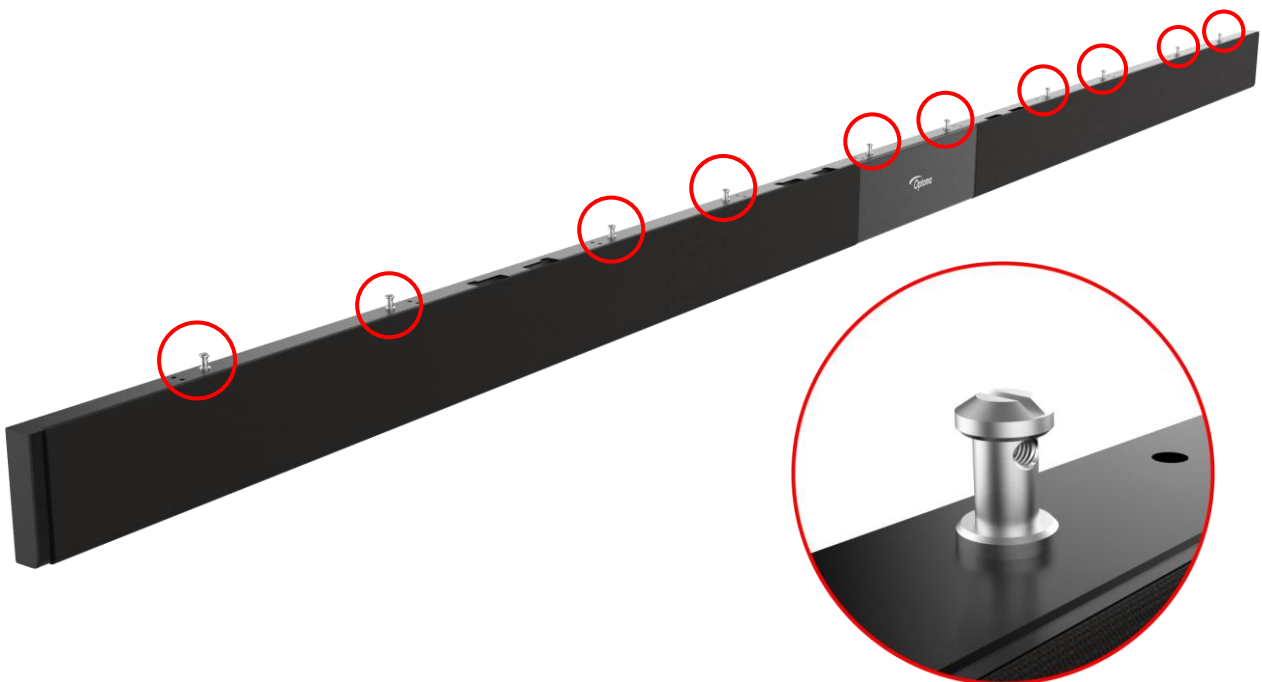
- 2) Use 1 piece of connecting plate to fix and splice left and right bottom frames of the FHDC135 display. Use 3 pieces of M3 screws to fix the plate at the indicated positions in the diagram.



-
- 3) The bottom frame is fixed to the cabinet assembly with locking blocks and retaining screws (insert the **locking block** first and then drive in the screws to fix), as shown in the figure below :

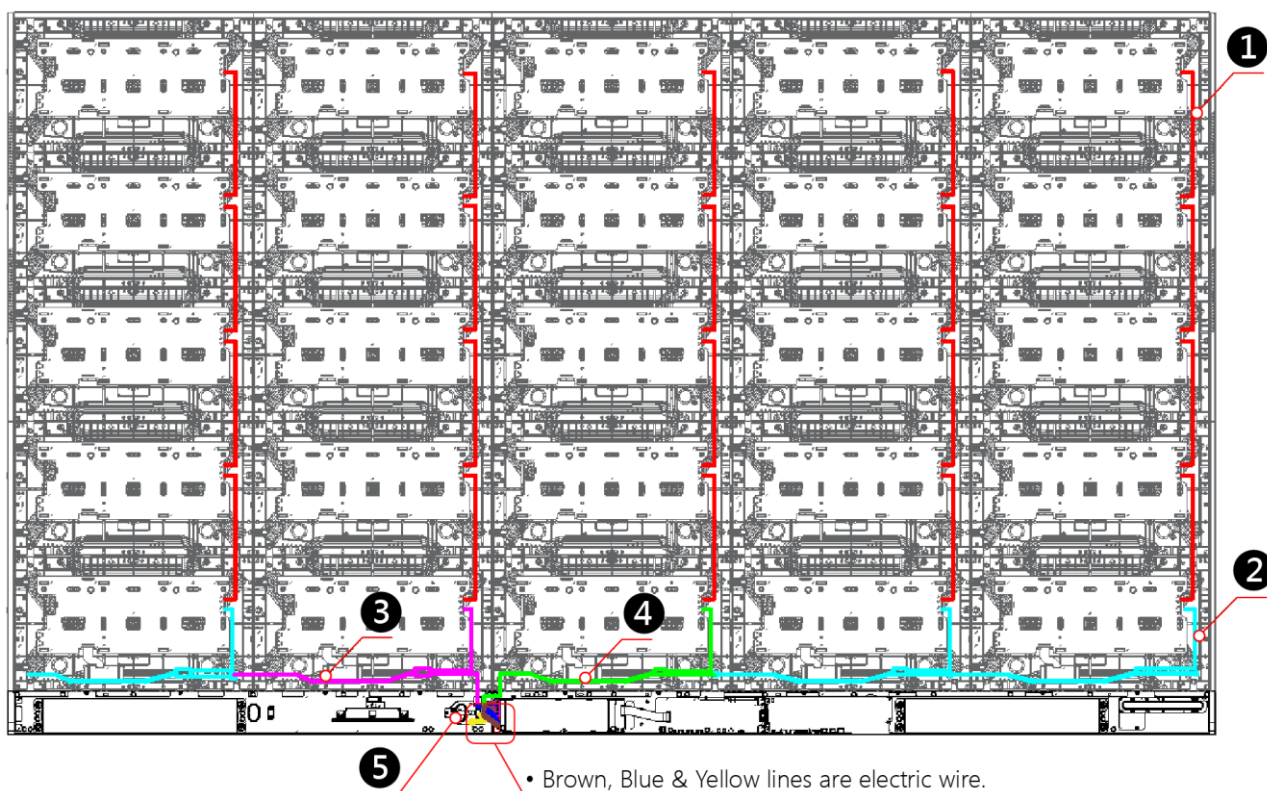


- 4) The bottom frame of the FHDC135 LED display has 10 fixing pins that connect with the cabinet. The assembly and fixing method are as described above.

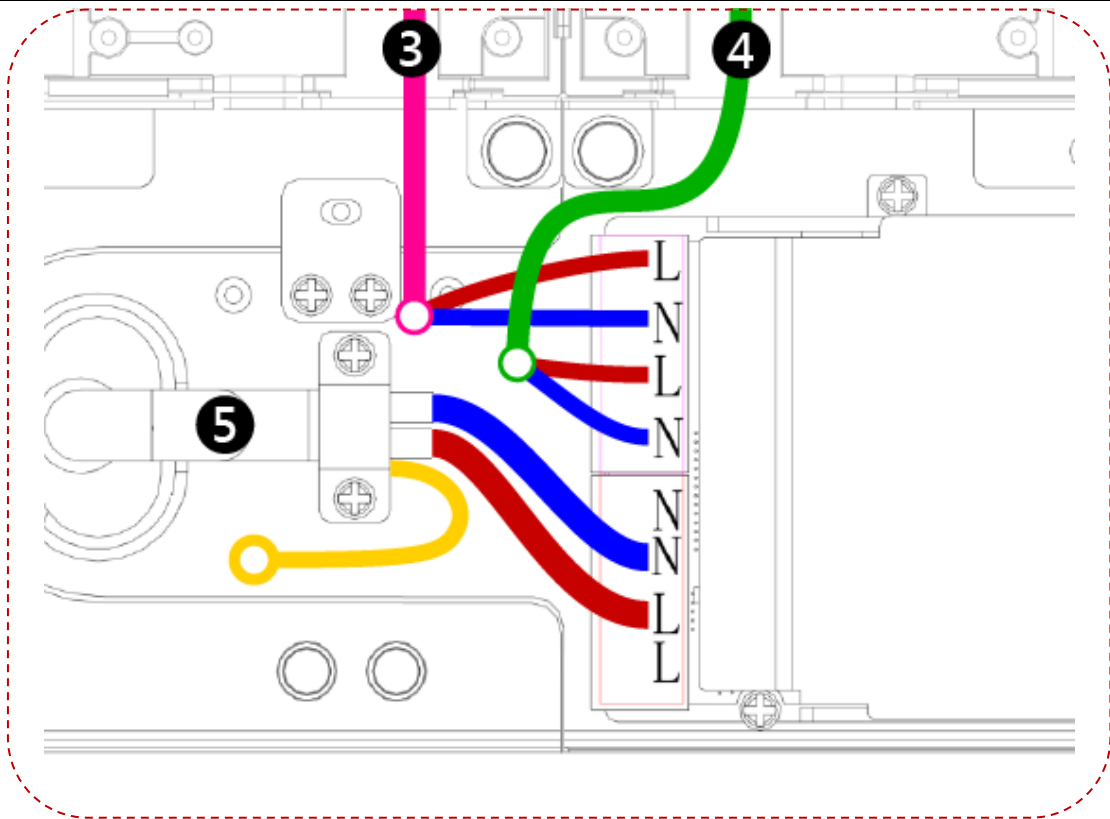


Step 6 : Cable routing

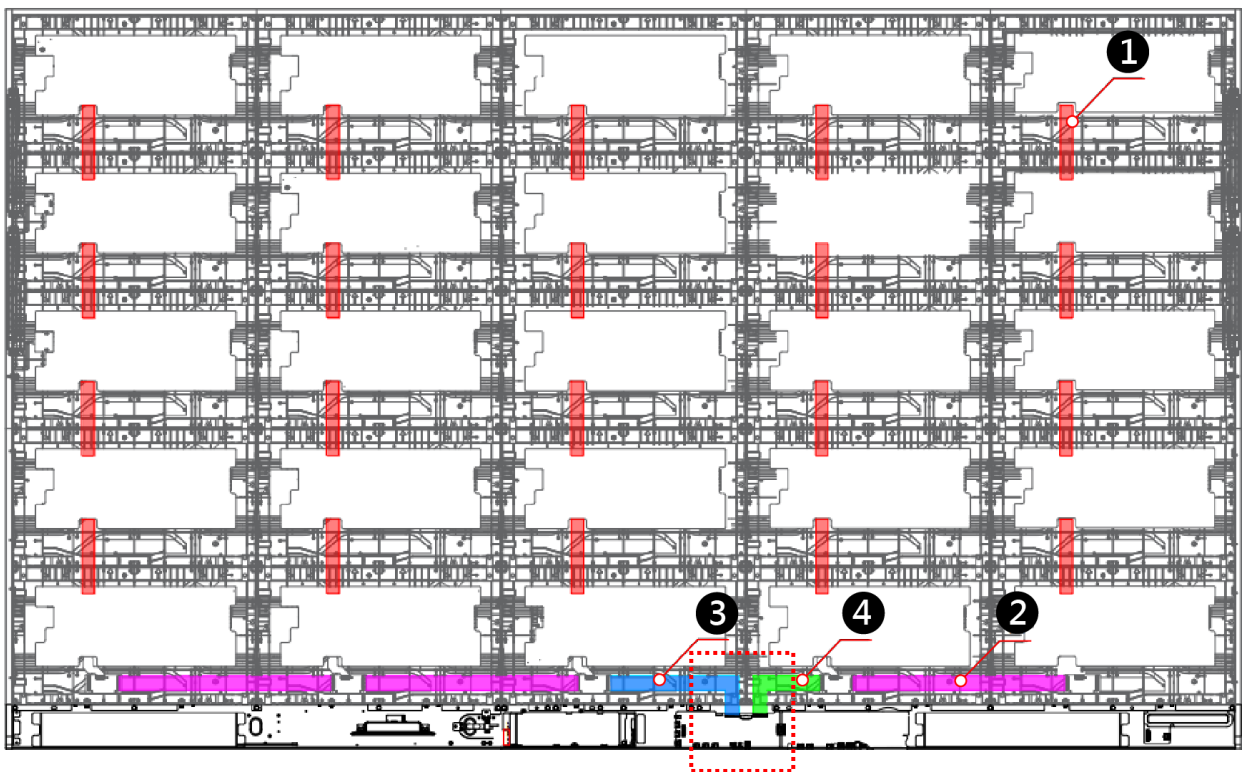
1) First, connect the power and signal cables between the unit chassis according to the diagram. Then, connect the signal and power cables to the bottom frame assembly (e.g. FHDC135). As shown in the figure below :



No.	Part Name	Quantity	Remarks
1	Vertical cascading power cable between the cabinets 20.	20	
2	Horizontal cascading cable between the cabinets.	3	
3	Horizontal cascading cable between the cabinets - left cascading.	1	
4	Horizontal cascading cable between the cabinets - right cascading.	1	
5	Input power cable.	1	

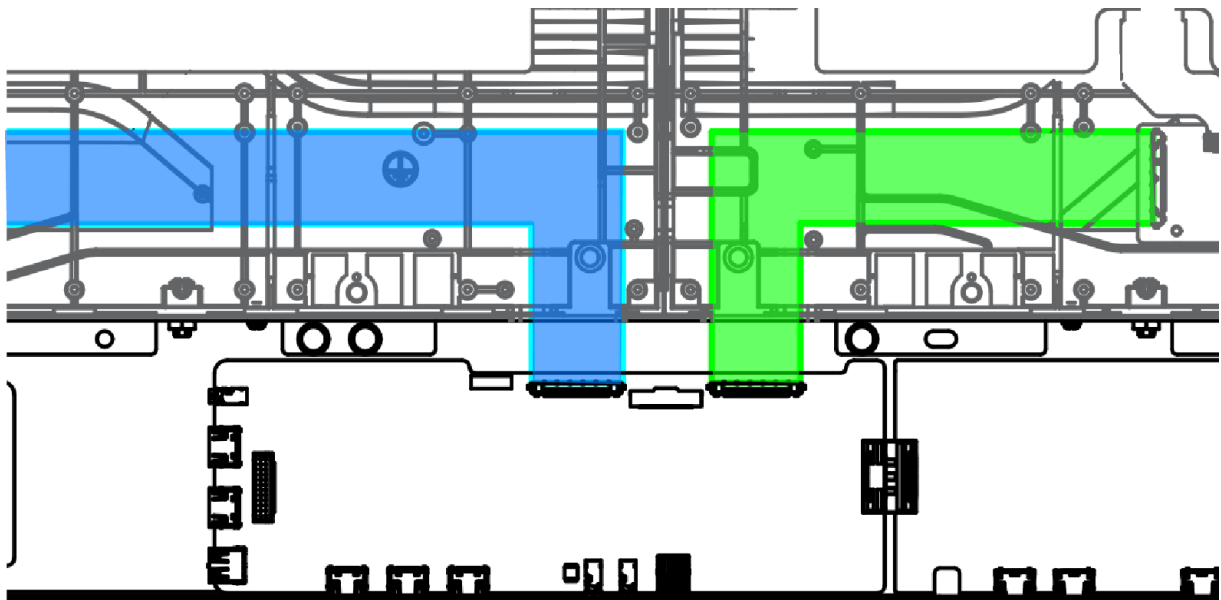


- PSU cable routing (Detail View)



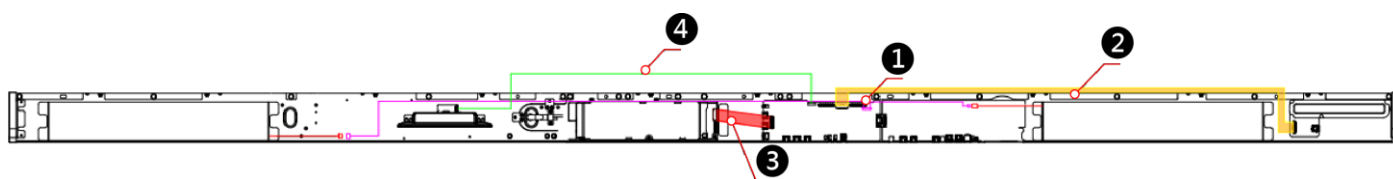
- Signal cable routing

No.	Part Name	Quantity	Remarks
1	Vertical signal FFC between the cabinets.	20	
2	Horizontal signal FFC between the cabinets	3	
3	Horizontal signal FFC between the cabinets - left cascading.	1	
4	Horizontal signal FFC between the cabinets - right cascading.	1	



- Signal cable routing detail view

1) Connect the cables inside the bottom frame as shown in the diagram below :



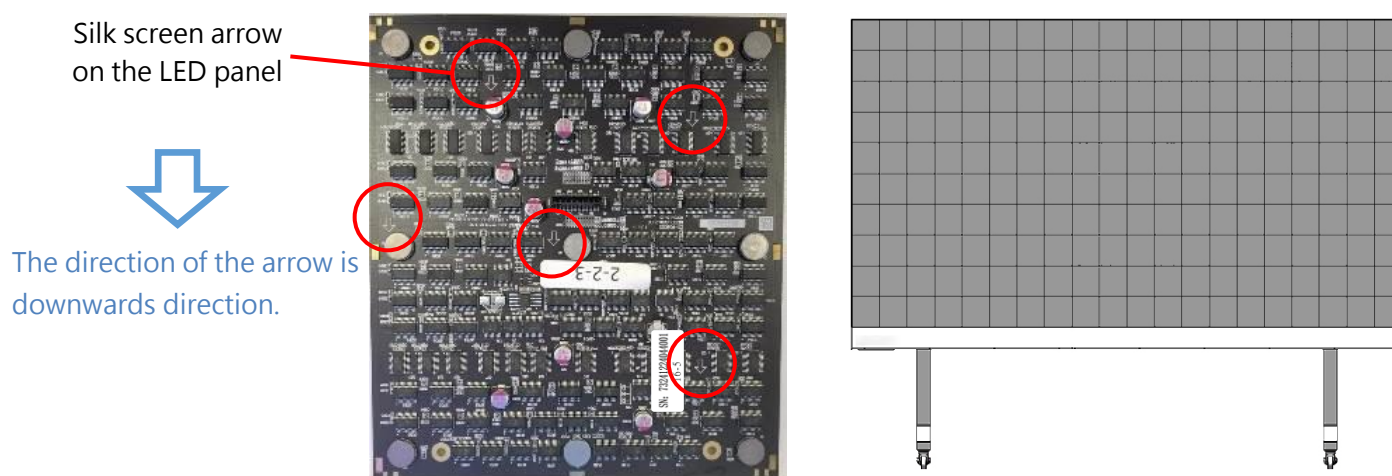
No.	Part Name	Quantity	Remarks
1	Speaker branch cable.	1	
2	Keyboard & transmitter card FPC.	1	
3	Transmitter card & power module wire harness.	1	
4	Wi-Fi module & transmitter card patch cord.	1	

Step 7 : Install the LED panel

* The installation sequence can be from left to right, from right to left, from bottom to top, or from top to bottom, depending on the on-site installation environment.

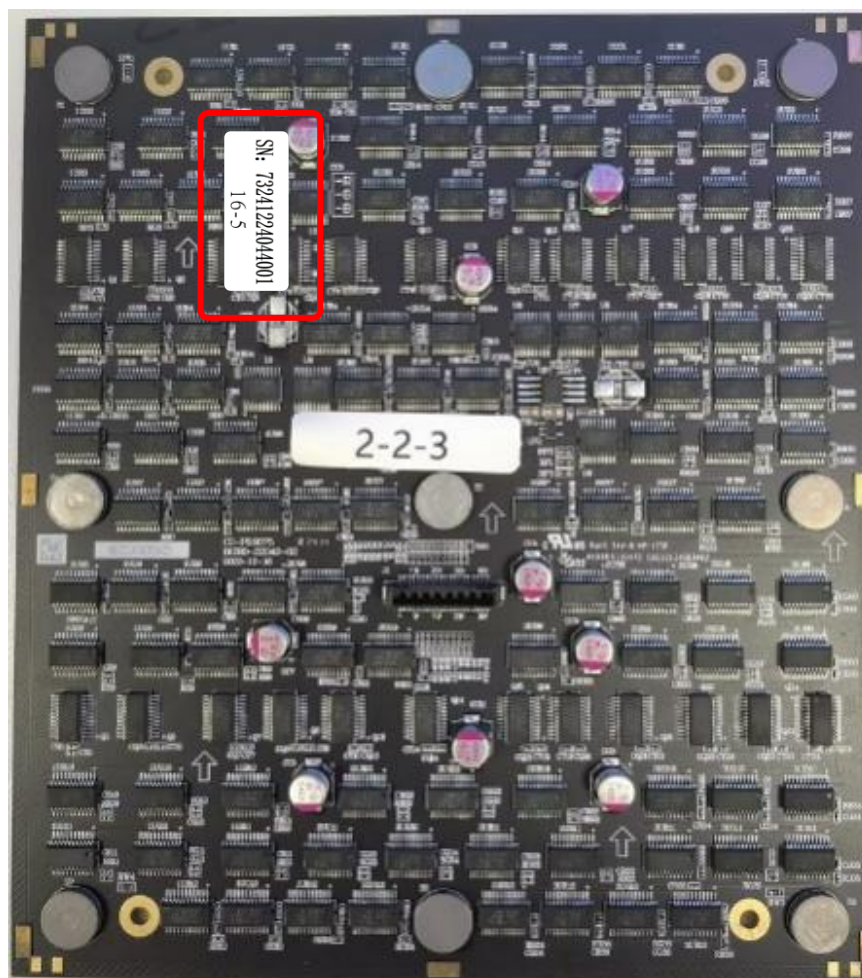
* Fix promptly if flatness is poor during assembly;

1) The connection method of the LED panel is a hard connection, which is connected through the connectors on the bridge board and the module. When installing, be sure to control the force and avoid forcefully inserting. Installation direction is opposite to the direction indicated by the arrow on the LED panel (i.e., LED panel rotated 180° for assembly), as shown in the figure below :



- Rear view of the LED panel.

-
- 2) Cabinet and LED panel serial number description, each shipped cabinet has a mark number in the top right corner (inside), this number represents the corresponding position of the cabinet when installed during factory calibration. Each LED panel (back) also has a mark number, such as : 16-5, where 16 represents the installation of this LED panel during factory calibration in cabinet 16, and 5 represents its position in cabinet 16.



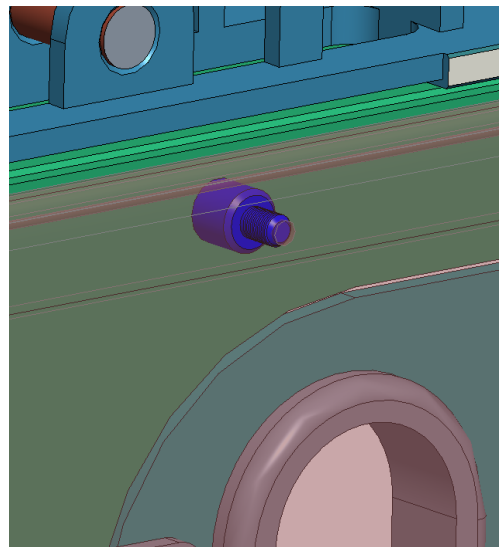
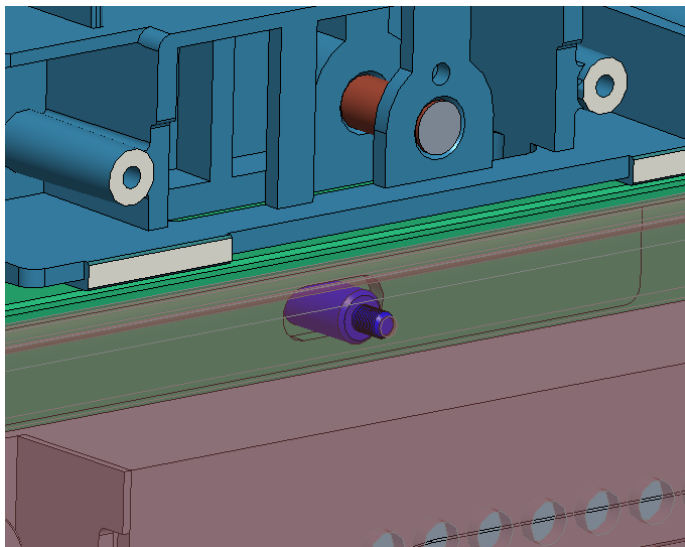
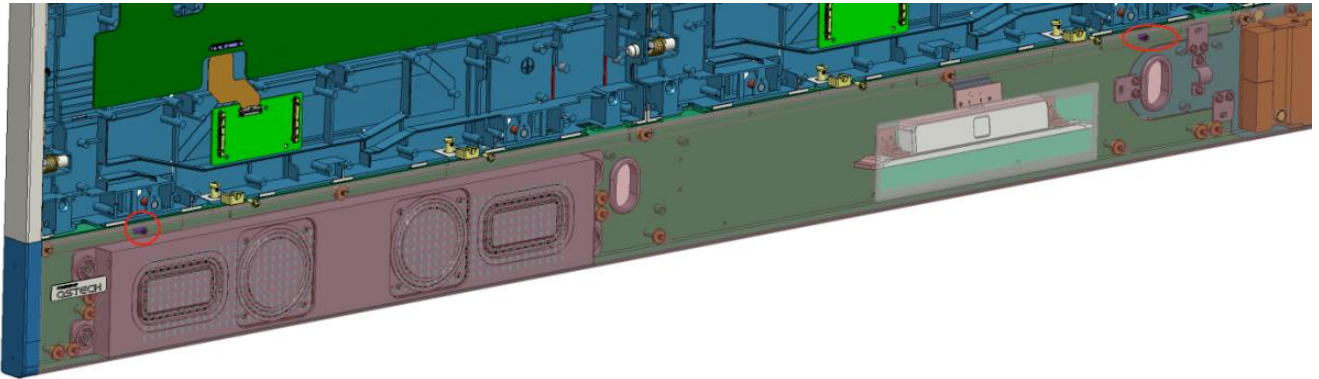
- 3) For better display effect, please refer to the schematic diagram and install the LED panel according to the assembly number during calibration.

1-1	1-2	1-3	01#	1-4	6-1	6-2	6-3	06#	6-4	11-1	11-2	11-3	11#	11-4	16-1	16-2	16-3	16#	16-4	21-1	21-2	21-3	21#	21-4
1-5	1-6	1-7	1-8	6-5	6-6	6-7	6-8	11-5	11-6	11-7	11-8	16-5	16-6	16-7	16-8	21-5	21-6	21-7	21-8					
2-1	2-2	2-3	02#	2-4	7-1	7-2	7-3	07#	7-4	12-1	12-2	12-3	12#	12-4	17-1	17-2	17-3	17#	17-4	22-1	22-2	22-3	22#	22-4
2-5	2-6	2-7	2-8	7-5	7-6	7-7	7-8	12-5	12-6	12-7	12-8	17-5	17-6	17-7	17-8	22-5	22-6	22-7	22-8					
3-1	3-2	3-3	03#	3-4	8-1	8-2	8-3	08#	8-4	13-1	13-2	13-3	13#	13-4	18-1	18-2	18-3	18#	18-4	23-1	23-2	23-3	23#	23-4
3-5	3-6	3-7	3-8	8-5	8-6	8-7	8-8	13-5	13-6	13-7	13-8	18-5	18-6	18-7	18-8	23-5	23-6	23-7	23-8					
4-1	4-2	4-3	04#	4-4	9-1	9-2	9-3	09#	9-4	14-1	14-2	14-3	14#	14-4	19-1	19-2	19-3	19#	19-4	24-1	24-2	24-3	24#	24-4
4-5	4-6	4-7	4-8	9-5	9-6	9-7	9-8	14-5	14-6	14-7	14-8	19-5	19-6	19-7	19-8	24-5	24-6	24-7	24-8					
5-1	5-2	5-3	05#	5-4	10-1	10-2	10-3	10#	10-4	15-1	15-2	15-3	15#	15-4	20-1	20-2	20-3	20#	20-4	25-1	25-2	25-3	25#	25-4
5-5	5-6	5-7	5-8	10-5	10-6	10-7	10-8	15-5	15-6	15-7	15-8	20-5	20-6	20-7	20-8	25-5	25-6	25-7	25-8					

The installation location map for FHDC135 LED panels.

Step 8 : Install the bottom frame cover plate

1) Install the bottom frame cover plate, according to the installation diagram, install the cover plate from right to left in order. The cover plate has locating pins in its original color. After aligning the pins, the cover plate will be fixed to the bottom frame through magnetic attraction, as shown in the figure below :



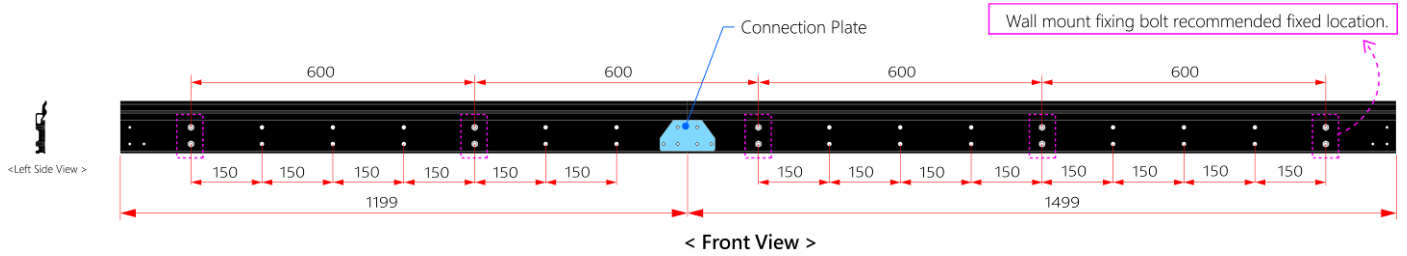
Wall-mounted installation



Wall-mounted installation effect picture

Installation steps :

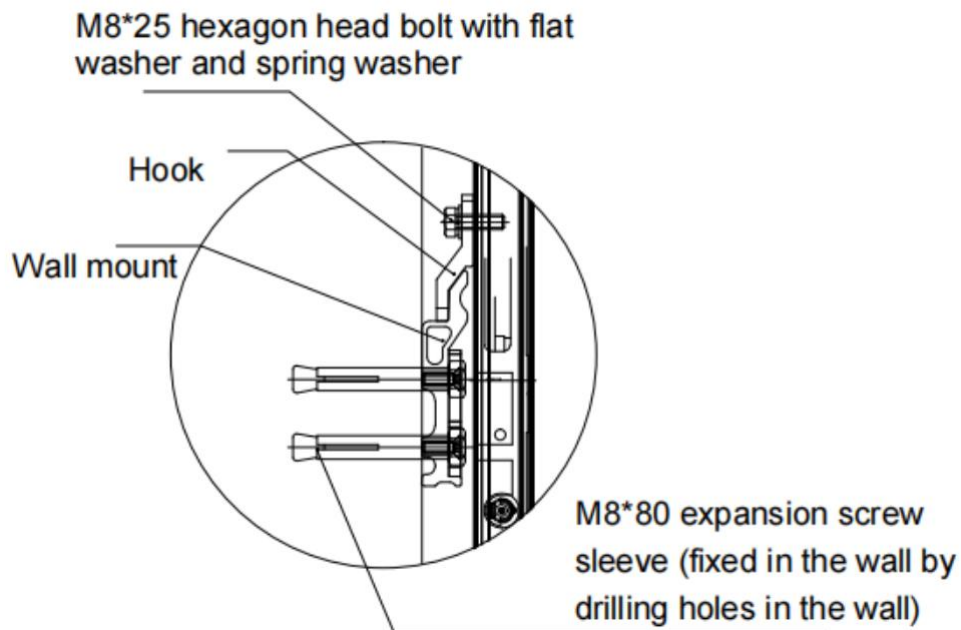
- 1) According to the on-site environment, combined with the height of the large screen from the ground, determine the drilling positions of the upper and lower wall mounts. To ensure horizontal alignment, a spirit level is required.
- 2) The upper wall mount and lower wall mount are respectively composed of wall mount 1 and wall mount 2, connected by connectors. Six M6*10 countersunk head screws are used to fix the connectors.
- 3) The drilling hole positions for wall mount 1 and wall mount 2 are as shown in the diagram.



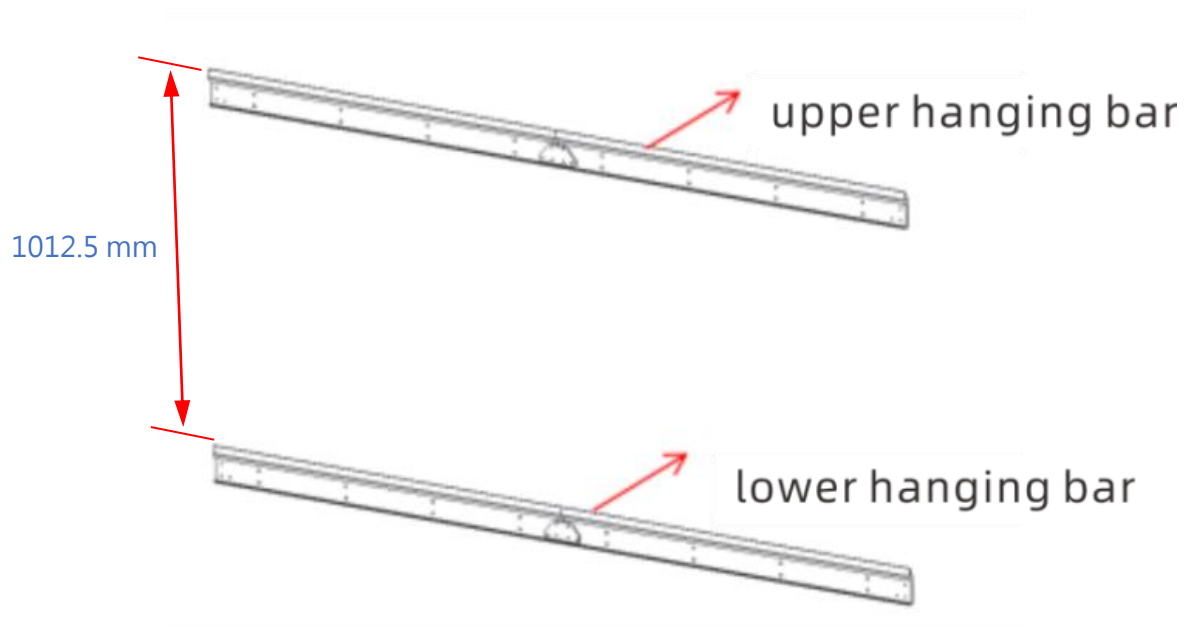
- 4) Mark the appropriate hole positions on the wall and drill holes at the marked points using a tool, with each hole having a diameter of 10mm.
- 5) Use M8*80 expansion bolt for installation at the corresponding hole position, as shown in the figure below;



- 1) Side sectional view of the installed wall mount.



- 2) The front view of the installed wall mounts is as shown in the figure below. The upper hanging bar and lower hanging bar are parallel to the ground and aligned up and down with each other. The distance between them is 1012.5mm.



-
- 3) Check if the wall mount is installed properly, by determining : 1) if it is level; 2) if the distance between the upper and lower wall mounts is correct. You can check and adjust using the following methods :
- I. Use a spirit level to measure if the wall mount is level. If it is not level, adjust it by loosening the expansion bolts, gently push it to be level by hand, then tighten the bolts.
 - II. Use a tape measure to check if the distance between the upper and lower wall mounts is correct. If it is incorrect, adjust it by loosening the expansion bolts, lightly pushing to adjust the distance by hand, and then tightening the bolts.
- 4) Install the cabinets according to the installation steps of those for the floor standing installation.

